



ELECTRONIC COPY

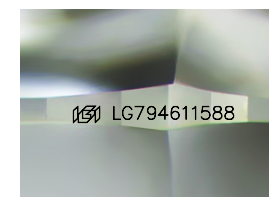
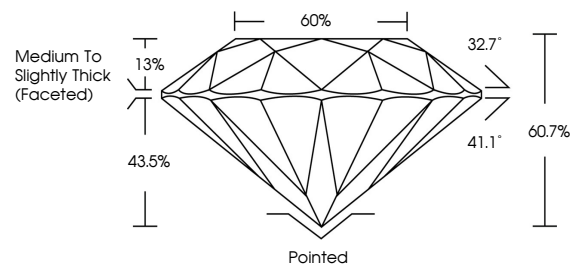
LG794611588
Report verification at igi.org



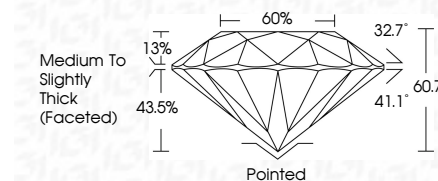
April 27, 2026
IGI Report Number **LG794611588**
Description **LABORATORY GROWN DIAMOND**
Shape and Cutting Style **ROUND BRILLIANT**
Measurements **6.48 - 6.50 X 3.94 MM**
GRADING RESULTS
Carat Weight **1.02 CARAT**
Color Grade **E**
Clarity Grade **VVS 1**
Cut Grade **EXCELLENT**

April 27, 2026
IGI Report Number **LG794611588**
Description **LABORATORY GROWN DIAMOND**
Shape and Cutting Style **ROUND BRILLIANT**
Measurements **6.48 - 6.50 X 3.94 MM**
GRADING RESULTS
Carat Weight **1.02 CARAT**
Color Grade **E**
Clarity Grade **VVS 1**
Cut Grade **EXCELLENT**

PROPORTIONS



Sample Image Used



ADDITIONAL GRADING INFORMATION
Polish **EXCELLENT**
Symmetry **EXCELLENT**
Fluorescence **NONE**
Inscription(s) **IGI LG794611588**

Comments: As Grown - No indication of post-growth treatment.
This Laboratory Grown Diamond was created by High Pressure High Temperature (HPHT) growth process.
Type II

COLOR

D E F G H I J Faint Very Light Light

CLARITY

FL	IF	VS ¹⁻²	VS ¹⁻²	SI ¹⁻²	I ¹⁻³
Flawless	Internally Flawless	Very Very Slightly Included	Very Slightly Included	Slightly Included	Included

ADDITIONAL GRADING INFORMATION

Polish **EXCELLENT**
Symmetry **EXCELLENT**
Fluorescence **NONE**
Inscription(s) **IGI LG794611588**
Comments: As Grown - No indication of post-growth treatment.
This Laboratory Grown Diamond was created by High Pressure High Temperature (HPHT) growth process.
Type II



IGI



April 27, 2026
IGI Report No LG794611588
ROUND BRILLIANT
6.48 - 6.50 X 3.94 MM
1.02 CARAT
E
VVS 1
EXCELLENT
60.7%
60%
Medium To Slightly Thick (Faceted)
Pointed
EXCELLENT
EXCELLENT
NONE
IGI LG794611588
Comments: As Grown - No indication of post-growth treatment.
This Laboratory Grown Diamond was created by High Pressure High Temperature (HPHT) growth process.
Type II