



ELECTRONIC COPY

LG794611534
Report verification at igi.org



April 27, 2026
IGI Report Number **LG794611534**
Description **LABORATORY GROWN DIAMOND**
Shape and Cutting Style **ROUND BRILLIANT**
Measurements **6.44 - 6.49 X 4.00 MM**
GRADING RESULTS
Carat Weight **1.02 CARAT**
Color Grade **F**
Clarity Grade **VVS 1**
Cut Grade **IDEAL**

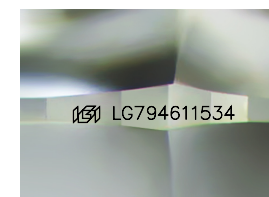
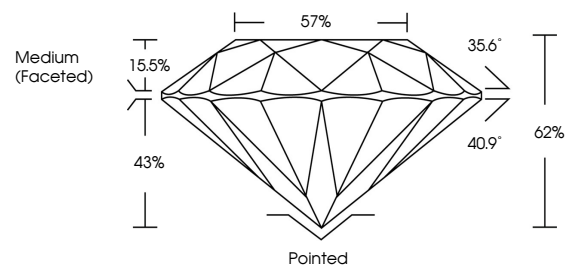
April 27, 2026
IGI Report Number **LG794611534**
Description **LABORATORY GROWN DIAMOND**
Shape and Cutting Style **ROUND BRILLIANT**
Measurements **6.44 - 6.49 X 4.00 MM**
GRADING RESULTS
Carat Weight **1.02 CARAT**
Color Grade **F**
Clarity Grade **VVS 1**
Cut Grade **IDEAL**

ADDITIONAL GRADING INFORMATION

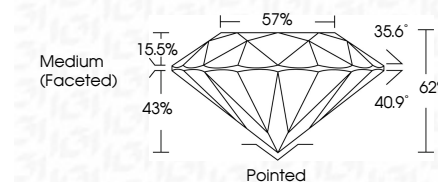
Polish **EXCELLENT**
Symmetry **EXCELLENT**
Fluorescence **NONE**
Inscription(s) **LG794611534**

Comments: As Grown - No indication of post-growth treatment.
This Laboratory Grown Diamond was created by High Pressure High Temperature (HPHT) growth process.
Type II

PROPORTIONS



Sample Image Used



COLOR

D E F G H I J Faint Very Light Light

CLARITY

FL	IF	VS ¹⁻²	VS ¹⁻²	SI ¹⁻²	I ¹⁻³
Flawless	Internally Flawless	Very Very Slightly Included	Very Slightly Included	Slightly Included	Included

ADDITIONAL GRADING INFORMATION

Polish **EXCELLENT**
Symmetry **EXCELLENT**
Fluorescence **NONE**
Inscription(s) **LG794611534**
Comments: As Grown - No indication of post-growth treatment.
This Laboratory Grown Diamond was created by High Pressure High Temperature (HPHT) growth process.
Type II



IGI



April 27, 2026
IGI Report No **LG794611534**
ROUND BRILLIANT
Carat Weight **1.02 CARAT**
Color Grade **F**
Clarity Grade **VVS 1**
Cut Grade **IDEAL**
Depth **62%**
Table **57%**
Girdle **Medium (Faceted)**
Culet **Pointed**
Polish **EXCELLENT**
Symmetry **EXCELLENT**
Fluorescence **NONE**
Inscriptions(s) **LG794611534**
Comments: As Grown - No indication of post-growth treatment.
This Laboratory Grown Diamond was created by High Pressure High Temperature (HPHT) growth process.
Type II