



**ELECTRONIC COPY**

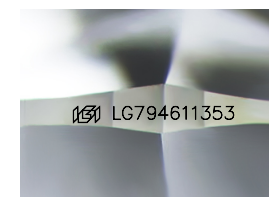
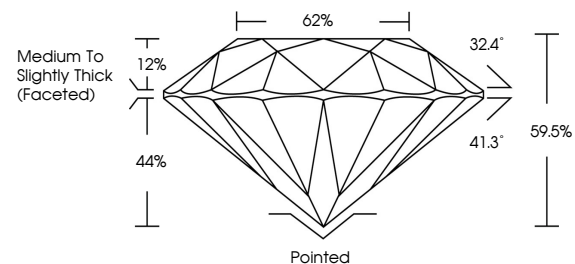
LG794611353  
Report verification at [igi.org](http://igi.org)



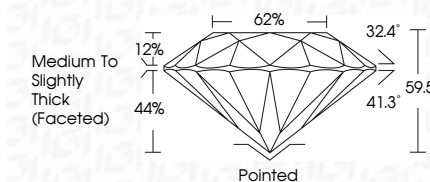
April 27, 2026  
IGI Report Number **LG794611353**  
Description **LABORATORY GROWN DIAMOND**  
Shape and Cutting Style **ROUND BRILLIANT**  
Measurements **6.50 - 6.54 X 3.88 MM**  
**GRADING RESULTS**  
Carat Weight **1.01 CARAT**  
Color Grade **E**  
Clarity Grade **VVS 2**  
Cut Grade **EXCELLENT**

April 27, 2026  
IGI Report Number **LG794611353**  
Description **LABORATORY GROWN DIAMOND**  
Shape and Cutting Style **ROUND BRILLIANT**  
Measurements **6.50 - 6.54 X 3.88 MM**  
**GRADING RESULTS**  
Carat Weight **1.01 CARAT**  
Color Grade **E**  
Clarity Grade **VVS 2**  
Cut Grade **EXCELLENT**

**PROPORTIONS**



Sample Image Used



**ADDITIONAL GRADING INFORMATION**  
Polish **EXCELLENT**  
Symmetry **EXCELLENT**  
Fluorescence **NONE**  
Inscription(s) **IGI LG794611353**

Comments: This Laboratory Grown Diamond was created by Chemical Vapor Deposition (CVD) growth process. Type IIa

**COLOR**

D E F G H I J Faint Very Light Light

**CLARITY**

FL	IF	VVS <sup>1-2</sup>	VS <sup>1-2</sup>	SI <sup>1-2</sup>	I <sup>1-3</sup>
Flawless	Internally Flawless	Very Very Slightly Included	Very Slightly Included	Slightly Included	Included

**ADDITIONAL GRADING INFORMATION**

Polish **EXCELLENT**  
Symmetry **EXCELLENT**  
Fluorescence **NONE**  
Inscription(s) **IGI LG794611353**  
Comments: This Laboratory Grown Diamond was created by Chemical Vapor Deposition (CVD) growth process. Type IIa



**IGI**



April 27, 2026  
IGI Report No LG794611353  
**ROUND BRILLIANT**  
6.50 - 6.54 X 3.88 MM  
1.01 CARAT  
E  
VVS 2  
EXCELLENT  
62%  
59.5%  
Medium To Slightly Thick (Faceted)  
Pointed  
EXCELLENT  
EXCELLENT  
NONE  
IGI LG794611353  
Comments: This Laboratory Grown Diamond was created by Chemical Vapor Deposition (CVD) growth process. Type IIa