



ELECTRONIC COPY

LG794610760
Report verification at igi.org



June 3, 2026
IGI Report Number LG794610760
Description LABORATORY GROWN DIAMOND
Shape and Cutting Style ROUND BRILLIANT
Measurements 8.08 - 8.12 X 5.01 MM
GRADING RESULTS
Carat Weight 2.00 CARATS
Color Grade FANCY INTENSE PINK
Clarity Grade VS 2
Cut Grade VERY GOOD

June 3, 2026
IGI Report Number LG794610760
Description LABORATORY GROWN DIAMOND
Shape and Cutting Style ROUND BRILLIANT
Measurements 8.08 - 8.12 X 5.01 MM

GRADING RESULTS

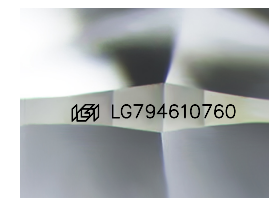
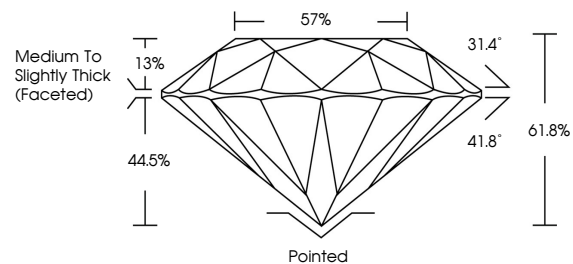
Carat Weight 2.00 CARATS
Color Grade FANCY INTENSE PINK
Clarity Grade VS 2
Cut Grade VERY GOOD

ADDITIONAL GRADING INFORMATION

Polish VERY GOOD
Symmetry VERY GOOD
Fluorescence SLIGHT
Inscription(s) LG794610760

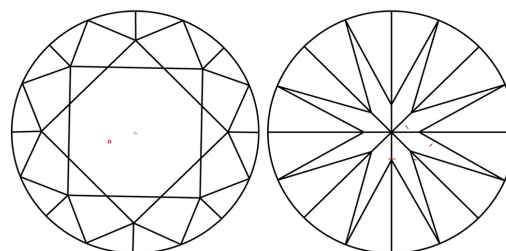
Comments: This Laboratory Grown Diamond was created by Chemical Vapor Deposition (CVD) growth process.
Indications of post-growth treatment.

PROPORTIONS



Sample Image Used

CLARITY CHARACTERISTICS



KEY TO SYMBOLS

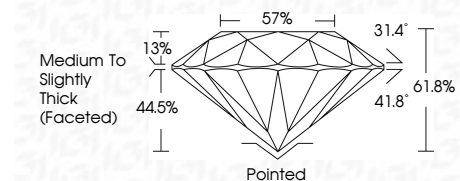
Red symbols indicate internal characteristics.
Green symbols indicate external characteristics.

COLOR

D E F G H I J Faint Very Light Light

CLARITY

FL IF VS 1-2 VS 1-2 SI 1-2 I 1-3
Flawless Internally Flawless Very Very Slightly Included Very Slightly Included Slightly Included Included



ADDITIONAL GRADING INFORMATION

Polish VERY GOOD
Symmetry VERY GOOD
Fluorescence SLIGHT
Inscription(s) LG794610760
Comments: This Laboratory Grown Diamond was created by Chemical Vapor Deposition (CVD) growth process.
Indications of post-growth treatment.



June 3, 2026
IGI Report No LG794610760
ROUND BRILLIANT
2.00 CARATS
FANCY INTENSE PINK
VS 2
VERY GOOD
61.8%
57%
Medium To Slightly Thick (Faceted)
Pointed
VERY GOOD
VERY GOOD
SLIGHT
IGI LG794610760
Comments: This Laboratory Grown Diamond was created by Chemical Vapor Deposition (CVD) growth process.
Indications of post-growth treatment.