



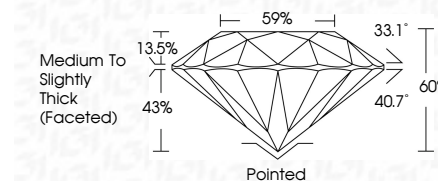
ELECTRONIC COPY

LG794610756
Report verification at igi.org



June 3, 2026
IGI Report Number **LG794610756**
Description **LABORATORY GROWN DIAMOND**
Shape and Cutting Style **ROUND BRILLIANT**
Measurements **7.44 - 7.52 X 4.49 MM**

GRADING RESULTS
Carat Weight **1.53 CARAT**
Color Grade **FANCY PINK**
Clarity Grade **VVS 2**
Cut Grade **IDEAL**



ADDITIONAL GRADING INFORMATION
Polish **VERY GOOD**
Symmetry **EXCELLENT**
Fluorescence **STRONG**
Inscription(s) **IGI LG794610756**
Comments: This Laboratory Grown Diamond was created by Chemical Vapor Deposition (CVD) growth process. Indications of post-growth treatment.



June 3, 2026
IGI Report No LG794610756
ROUND BRILLIANT
1.53 CARAT
FANCY PINK
1.53 CARAT
FANCY PINK
VVS 2
IDEAL
60%
59%
Medium To Slightly Thick (Faceted)
Pointed
VERY GOOD
EXCELLENT
STRONG
IGI LG794610756
Comments: This Laboratory Grown Diamond was created by Chemical Vapor Deposition (CVD) growth process. Indications of post-growth treatment.

LABORATORY GROWN DIAMOND REPORT

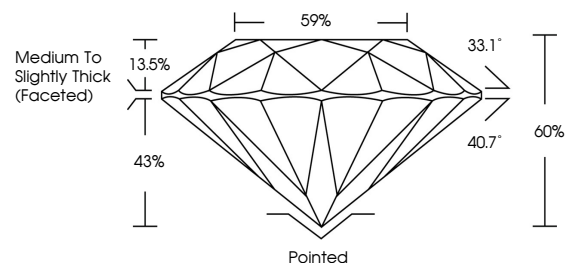
June 3, 2026
IGI Report Number **LG794610756**
Description **LABORATORY GROWN DIAMOND**
Shape and Cutting Style **ROUND BRILLIANT**
Measurements **7.44 - 7.52 X 4.49 MM**

GRADING RESULTS
Carat Weight **1.53 CARAT**
Color Grade **FANCY PINK**
Clarity Grade **VVS 2**
Cut Grade **IDEAL**

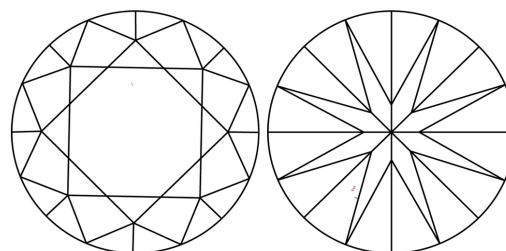
ADDITIONAL GRADING INFORMATION
Polish **VERY GOOD**
Symmetry **EXCELLENT**
Fluorescence **STRONG**
Inscription(s) **IGI LG794610756**

Comments: This Laboratory Grown Diamond was created by Chemical Vapor Deposition (CVD) growth process. Indications of post-growth treatment.

PROPORTIONS

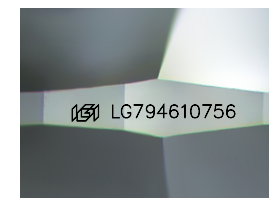


CLARITY CHARACTERISTICS



KEY TO SYMBOLS

Red symbols indicate internal characteristics.
Green symbols indicate external characteristics.



Sample Image Used

COLOR

D E F G H I J Faint Very Light Light

CLARITY

FL	IF	VVS ¹⁻²	VS ¹⁻²	SI ¹⁻²	I ¹⁻³
Flawless	Internally Flawless	Very Very Slightly Included	Very Slightly Included	Slightly Included	Included

