



**ELECTRONIC COPY**

LG794609478  
Report verification at igi.org



May 8, 2026

IGI Report Number **LG794609478**

Description **LABORATORY GROWN DIAMOND**

Shape and Cutting Style **OVAL BRILLIANT**

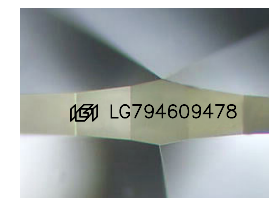
Measurements **8.12 X 5.85 X 3.56 MM**

**GRADING RESULTS**

Carat Weight **1.07 CARAT**

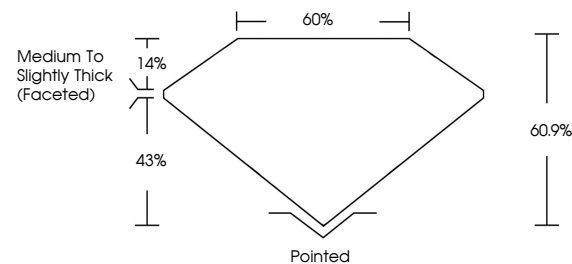
Color Grade **G**

Clarity Grade **VVS 1**

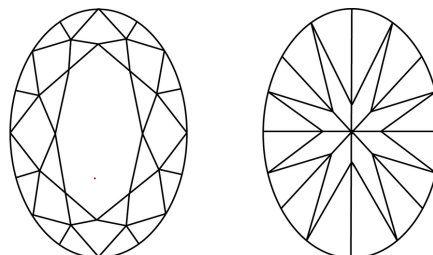


Sample Image Used

**PROPORTIONS**



**CLARITY CHARACTERISTICS**



**KEY TO SYMBOLS**

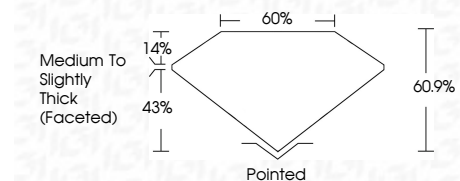
Red symbols indicate internal characteristics.  
Green symbols indicate external characteristics.

**COLOR**

D E F G H I J Faint Very Light Light

**CLARITY**

FL	IF	VVS <sup>1-2</sup>	VS <sup>1-2</sup>	SI <sup>1-2</sup>	I <sup>1-3</sup>
Flawless	Internally Flawless	Very Very Slightly Included	Very Slightly Included	Slightly Included	Included



**ADDITIONAL GRADING INFORMATION**

Polish **EXCELLENT**

Symmetry **EXCELLENT**

Fluorescence **NONE**

Inscription(s) **IGI LG794609478**

Comments: This Laboratory Grown Diamond was created by Chemical Vapor Deposition (CVD) growth process. Type IIa



**IGI**



May 8, 2026  
IGI Report No LG794609478  
OVAL BRILLIANT  
8.12 X 5.85 X 3.56 MM  
Carat Weight 1.07 CARAT  
Color Grade G  
Clarity Grade VVS 1  
Depth 43%  
Table 14%  
Girdle Medium to Slightly Thick (Faceted)  
Culet Pointed  
Polish EXCELLENT  
Symmetry EXCELLENT  
Fluorescence NONE  
Inscription(s) IGI LG794609478

Comments: This Laboratory Grown Diamond was created by Chemical Vapor Deposition (CVD) growth process. Type IIa