



ELECTRONIC COPY

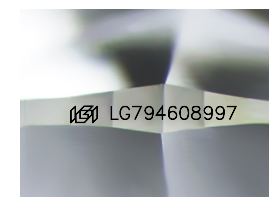
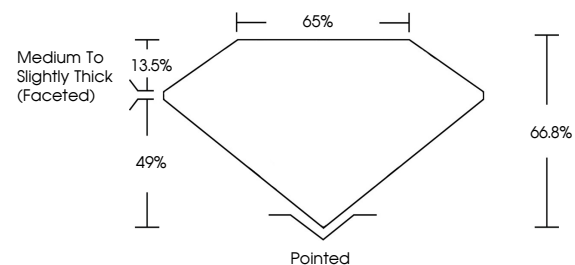
LG794608997
Report verification at igi.org



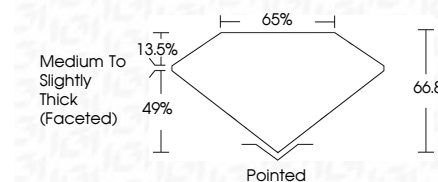
May 25, 2026
IGI Report Number **LG794608997**
Description **LABORATORY GROWN DIAMOND**
Shape and Cutting Style **CUSHION CUT**
Measurements **7.19 X 7.17 X 4.79 MM**
GRADING RESULTS
Carat Weight **2.10 CARATS**
Color Grade **E**
Clarity Grade **VVS 2**

May 25, 2026
IGI Report Number **LG794608997**
Description **LABORATORY GROWN DIAMOND**
Shape and Cutting Style **CUSHION CUT**
Measurements **7.19 X 7.17 X 4.79 MM**
GRADING RESULTS
Carat Weight **2.10 CARATS**
Color Grade **E**
Clarity Grade **VVS 2**

PROPORTIONS



Sample Image Used



ADDITIONAL GRADING INFORMATION

Polish **EXCELLENT**
Symmetry **EXCELLENT**
Fluorescence **NONE**
Inscription(s) **IGI LG794608997**

Comments: This Laboratory Grown Diamond was created by Chemical Vapor Deposition (CVD) growth process.
Type IIa

ADDITIONAL GRADING INFORMATION

Polish **EXCELLENT**
Symmetry **EXCELLENT**
Fluorescence **NONE**
Inscription(s) **IGI LG794608997**
Comments: This Laboratory Grown Diamond was created by Chemical Vapor Deposition (CVD) growth process.
Type IIa

COLOR

D E F G H I J Faint Very Light Light

CLARITY

FL	IF	VS ¹⁻²	VS ¹⁻²	SI ¹⁻²	I ¹⁻³
Flawless	Internally Flawless	Very Very Slightly Included	Very Slightly Included	Slightly Included	Included



IGI



May 25, 2026
IGI Report No **LG794608997**
CUSHION CUT
7.19 X 7.17 X 4.79 MM
2.10 CARATS
E
VVS 2
66.8%
65%
Medium to Slightly Thick (Faceted)
Pointed
EXCELLENT
EXCELLENT
NONE
IGI LG794608997
Comments: This Laboratory Grown Diamond was created by Chemical Vapor Deposition (CVD) growth process.
Type IIa