



ELECTRONIC COPY

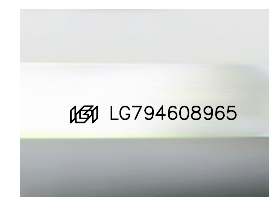
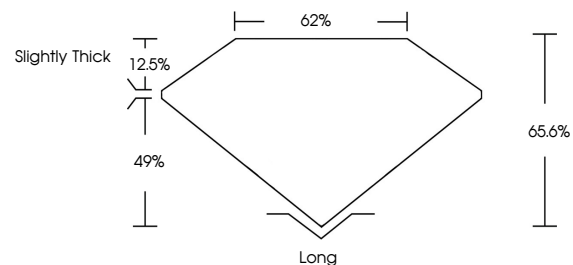
LG794608965 Report verification at igi.org



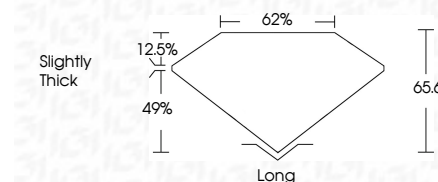
May 25, 2026 IGI Report Number LG794608965 Description LABORATORY GROWN DIAMOND Shape and Cutting Style EMERALD CUT Measurements 7.52 X 5.23 X 3.43 MM GRADING RESULTS Carat Weight 1.27 CARAT Color Grade E Clarity Grade VVS 2

May 25, 2026 IGI Report Number LG794608965 Description LABORATORY GROWN DIAMOND Shape and Cutting Style EMERALD CUT Measurements 7.52 X 5.23 X 3.43 MM GRADING RESULTS Carat Weight 1.27 CARAT Color Grade E Clarity Grade VVS 2

PROPORTIONS



Sample Image Used



ADDITIONAL GRADING INFORMATION

Polish EXCELLENT Symmetry EXCELLENT Fluorescence NONE Inscription(s) LG794608965

Comments: This Laboratory Grown Diamond was created by Chemical Vapor Deposition (CVD) growth process. Type IIa

ADDITIONAL GRADING INFORMATION

Polish EXCELLENT Symmetry EXCELLENT Fluorescence NONE Inscription(s) LG794608965 Comments: This Laboratory Grown Diamond was created by Chemical Vapor Deposition (CVD) growth process. Type IIa

COLOR

D E F G H I J Faint Very Light Light

CLARITY

FL IF VVS 1-2 VS 1-2 SI 1-2 I 1-3 Flawless Internally Flawless Very Very Slightly Included Very Slightly Included Slightly Included Included



IGI



May 25, 2026 IGI Report No LG794608965 EMERALD CUT 1.27 CARAT E 7.52 X 5.23 X 3.43 MM Carat Weight Color Grade VVS 2 Depth 49.6% Table 62% Girdle Slightly Thick Culet Long EXCELLENT EXCELLENT NONE NONE LG794608965

Comments: This Laboratory Grown Diamond was created by Chemical Vapor Deposition (CVD) growth process. Type IIa