



ELECTRONIC COPY

LG794608761 Report verification at igi.org



May 4, 2026

IGI Report Number LG794608761

Description LABORATORY GROWN DIAMOND

Shape and Cutting Style CUT CORNERED RECTANGULAR MODIFIED BRILLIANT

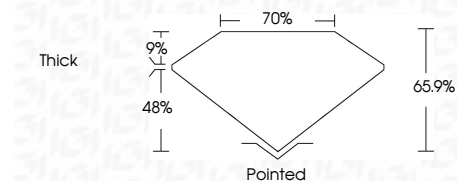
Measurements 6.95 X 4.92 X 3.24 MM

GRADING RESULTS

Carat Weight 1.00 CARAT

Color Grade E

Clarity Grade VVS 2



ADDITIONAL GRADING INFORMATION

Polish VERY GOOD

Symmetry EXCELLENT

Fluorescence NONE

Inscription(s) IGI LG794608761

Comments: This Laboratory Grown Diamond was created by Chemical Vapor Deposition (CVD) growth process. Type IIa



May 4, 2026

IGI Report Number LG794608761

Description LABORATORY GROWN DIAMOND

Shape and Cutting Style CUT CORNERED RECTANGULAR MODIFIED BRILLIANT

Measurements 6.95 X 4.92 X 3.24 MM

GRADING RESULTS

Carat Weight 1.00 CARAT

Color Grade E

Clarity Grade VVS 2

ADDITIONAL GRADING INFORMATION

Polish VERY GOOD

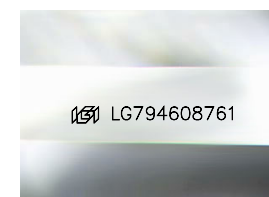
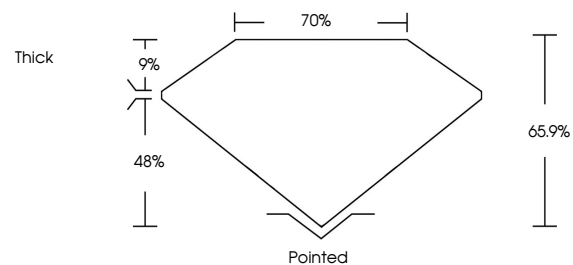
Symmetry EXCELLENT

Fluorescence NONE

Inscription(s) IGI LG794608761

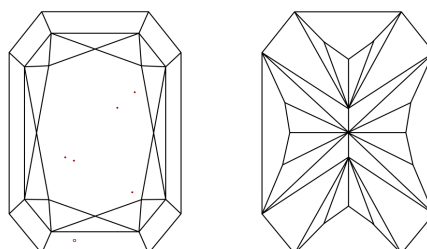
Comments: This Laboratory Grown Diamond was created by Chemical Vapor Deposition (CVD) growth process. Type IIa

PROPORTIONS



Sample Image Used

CLARITY CHARACTERISTICS



KEY TO SYMBOLS

Red symbols indicate internal characteristics. Green symbols indicate external characteristics.

COLOR

D E F G H I J Faint Very Light Light

CLARITY

FL IF VVS 1-2 VS 1-2 SI 1-2 I 1-3 Flawless Internally Flawless Very Very Slightly Included Very Slightly Included Slightly Included Included

Summary of report details including date, report number, description, measurements, grading results, and additional information.

Comments: This Laboratory Grown Diamond was created by Chemical Vapor Deposition (CVD) growth process. Type IIa