



**ELECTRONIC COPY**

LG794608755  
Report verification at igi.org



May 5, 2026

IGI Report Number **LG794608755**

Description **LABORATORY GROWN DIAMOND**

Shape and Cutting Style **CUT CORNERED  
RECTANGULAR MODIFIED  
BRILLIANT**

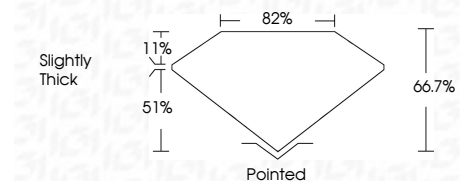
Measurements **7.10 X 4.96 X 3.31 MM**

**GRADING RESULTS**

Carat Weight **1.02 CARAT**

Color Grade **E**

Clarity Grade **VVS 2**



**ADDITIONAL GRADING INFORMATION**

Polish **VERY GOOD**

Symmetry **VERY GOOD**

Fluorescence **NONE**

Inscription(s) **IGI LG794608755**

Comments: This Laboratory Grown Diamond was created by Chemical Vapor Deposition (CVD) growth process. Type IIa



|             |                           |                                       |                       |              |             |               |       |       |                |         |           |           |              |                 |
|-------------|---------------------------|---------------------------------------|-----------------------|--------------|-------------|---------------|-------|-------|----------------|---------|-----------|-----------|--------------|-----------------|
| May 5, 2026 | IGI Report No LG794608755 | CUT CORNERED RECT. MODIFIED BRILLIANT | 7.10 X 4.96 X 3.31 MM | 1.02 CARAT   | E           | VVS 2         | 66.7% | 82%   | Slightly Thick | Pointed | VERY GOOD | VERY GOOD | NONE         | IGI LG794608755 |
| Polish      | Symmetry                  | Fluorescence                          | Inscription(s)        | Carat Weight | Color Grade | Clarity Grade | Depth | Table | Girdle         | Culet   | Polish    | Symmetry  | Fluorescence | Inscription(s)  |
| VERY GOOD   | VERY GOOD                 | NONE                                  | IGI LG794608755       | 1.02 CARAT   | E           | VVS 2         | 66.7% | 82%   | Slightly Thick | Pointed | VERY GOOD | VERY GOOD | NONE         | IGI LG794608755 |

Comments: This Laboratory Grown Diamond was created by Chemical Vapor Deposition (CVD) growth process. Type IIa

**LABORATORY GROWN DIAMOND REPORT**

May 5, 2026

IGI Report Number **LG794608755**

Description **LABORATORY GROWN DIAMOND**

Shape and Cutting Style **CUT CORNERED RECTANGULAR  
MODIFIED BRILLIANT**

Measurements **7.10 X 4.96 X 3.31 MM**

**GRADING RESULTS**

Carat Weight **1.02 CARAT**

Color Grade **E**

Clarity Grade **VVS 2**

**ADDITIONAL GRADING INFORMATION**

Polish **VERY GOOD**

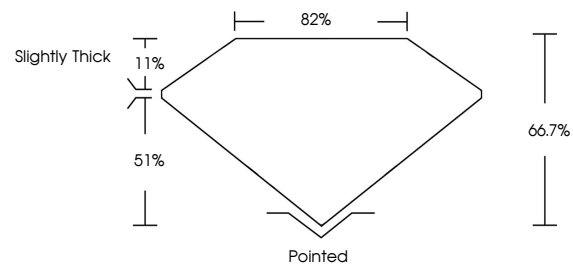
Symmetry **VERY GOOD**

Fluorescence **NONE**

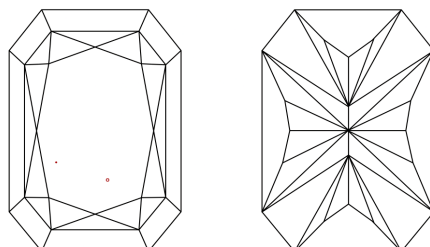
Inscription(s) **IGI LG794608755**

Comments: This Laboratory Grown Diamond was created by Chemical Vapor Deposition (CVD) growth process. Type IIa

**PROPORTIONS**

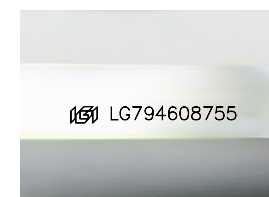


**CLARITY CHARACTERISTICS**



**KEY TO SYMBOLS**

Red symbols indicate internal characteristics.  
Green symbols indicate external characteristics.



Sample Image Used

**COLOR**

D E F G H I J Faint Very Light Light

**CLARITY**

|          |                     |                             |                        |                   |                  |
|----------|---------------------|-----------------------------|------------------------|-------------------|------------------|
| FL       | IF                  | VVS <sup>1-2</sup>          | VS <sup>1-2</sup>      | SI <sup>1-2</sup> | I <sup>1-3</sup> |
| Flawless | Internally Flawless | Very Very Slightly Included | Very Slightly Included | Slightly Included | Included         |

