



ELECTRONIC COPY

LG794608685
Report verification at igi.org



May 5, 2026

IGI Report Number **LG794608685**

Description **LABORATORY GROWN DIAMOND**

Shape and Cutting Style **CUT CORNERED
RECTANGULAR MODIFIED
BRILLIANT**

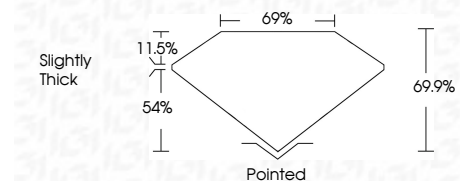
Measurements **7.22 X 4.98 X 3.48 MM**

GRADING RESULTS

Carat Weight **1.08 CARAT**

Color Grade **E**

Clarity Grade **VVS 2**



ADDITIONAL GRADING INFORMATION

Polish **VERY GOOD**

Symmetry **EXCELLENT**

Fluorescence **NONE**

Inscription(s) **IGI LG794608685**

Comments: This Laboratory Grown Diamond was created by Chemical Vapor Deposition (CVD) growth process. Type IIa



May 5, 2026	IGI Report No LG794608685	CUT CORNERED RECT. MODIFIED BRILLIANT	7.22 X 4.98 X 3.48 MM	1.08 CARAT	E	VVS 2	69%	69%	Slightly Thick	Pointed	VERY GOOD	EXCELLENT	NONE	IGI LG794608685
Carat Weight	Color Grade	Clarity Grade	Table	Depth	Girdle	Culet	Polish	Symmetry	Fluorescence	Inscription(s)	Comments: This Laboratory Grown Diamond was created by Chemical Vapor Deposition (CVD) growth process. Type IIa			

LABORATORY GROWN DIAMOND REPORT

May 5, 2026
IGI Report Number **LG794608685**
Description **LABORATORY GROWN DIAMOND**
Shape and Cutting Style **CUT CORNERED RECTANGULAR
MODIFIED BRILLIANT**
Measurements **7.22 X 4.98 X 3.48 MM**

GRADING RESULTS

Carat Weight **1.08 CARAT**

Color Grade **E**

Clarity Grade **VVS 2**

ADDITIONAL GRADING INFORMATION

Polish **VERY GOOD**

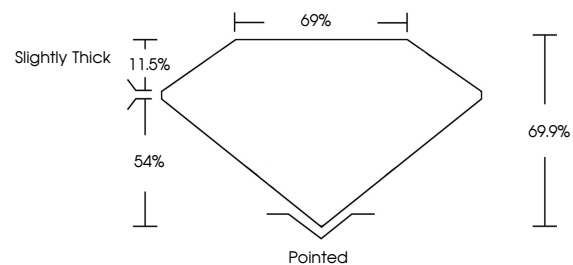
Symmetry **EXCELLENT**

Fluorescence **NONE**

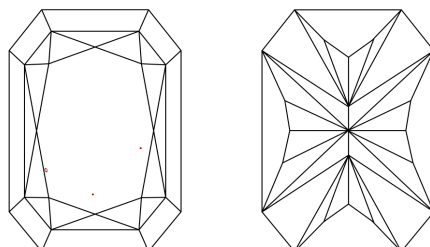
Inscription(s) **IGI LG794608685**

Comments: This Laboratory Grown Diamond was created by Chemical Vapor Deposition (CVD) growth process. Type IIa

PROPORTIONS

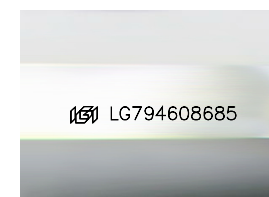


CLARITY CHARACTERISTICS



KEY TO SYMBOLS

Red symbols indicate internal characteristics.
Green symbols indicate external characteristics.



Sample Image Used

COLOR

D E F G H I J Faint Very Light Light

CLARITY

FL	IF	VVS ¹⁻²	VS ¹⁻²	SI ¹⁻²	I ¹⁻³
Flawless	Internally Flawless	Very Very Slightly Included	Very Slightly Included	Slightly Included	Included

