



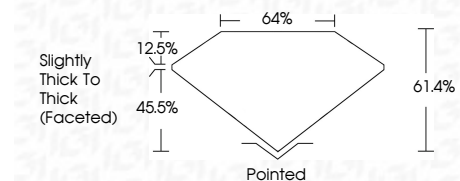
ELECTRONIC COPY

LG794608600
Report verification at igi.org



May 5, 2026
IGI Report Number **LG794608600**
Description **LABORATORY GROWN DIAMOND**
Shape and Cutting Style **PEAR BRILLIANT**
Measurements **8.55 X 5.78 X 3.55 MM**

GRADING RESULTS
Carat Weight **1.03 CARAT**
Color Grade **E**
Clarity Grade **VS 1**



ADDITIONAL GRADING INFORMATION
Polish **VERY GOOD**
Symmetry **VERY GOOD**
Fluorescence **NONE**
Inscription(s) **IGI LG794608600**
Comments: This Laboratory Grown Diamond was created by Chemical Vapor Deposition (CVD) growth process. Type IIa

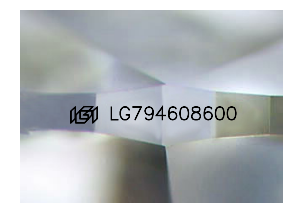
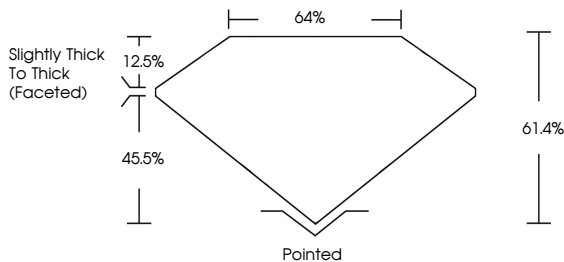


May 5, 2026
IGI Report No **LG794608600**
PEAR BRILLIANT
8.55 X 5.78 X 3.55 MM
Carat Weight **1.03 CARAT**
Color Grade **E**
Clarity Grade **VS 1**
Table **61.4%**
Depth **45.5%**
Girdle **Slightly Thick To Thick (Faceted)**
Culet **Pointed**
Polish **VERY GOOD**
Symmetry **VERY GOOD**
Fluorescence **NONE**
Inscription(s) **IGI LG794608600**
Comments: This Laboratory Grown Diamond was created by Chemical Vapor Deposition (CVD) growth process. Type IIa

May 5, 2026
IGI Report Number **LG794608600**
Description **LABORATORY GROWN DIAMOND**
Shape and Cutting Style **PEAR BRILLIANT**
Measurements **8.55 X 5.78 X 3.55 MM**
GRADING RESULTS
Carat Weight **1.03 CARAT**
Color Grade **E**
Clarity Grade **VS 1**
ADDITIONAL GRADING INFORMATION
Polish **VERY GOOD**
Symmetry **VERY GOOD**
Fluorescence **NONE**
Inscription(s) **IGI LG794608600**

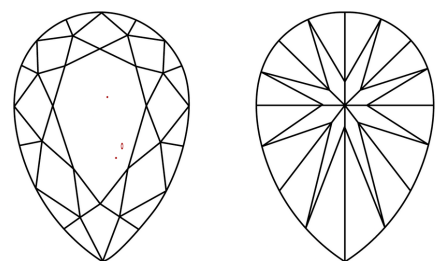
Comments: This Laboratory Grown Diamond was created by Chemical Vapor Deposition (CVD) growth process. Type IIa

PROPORTIONS



Sample Image Used

CLARITY CHARACTERISTICS



KEY TO SYMBOLS
Red symbols indicate internal characteristics.
Green symbols indicate external characteristics.

COLOR

D	E	F	G	H	I	J	Faint	Very Light	Light
---	---	---	---	---	---	---	-------	------------	-------

CLARITY

FL	IF	VS ¹⁻²	VS ¹⁻²	SI ¹⁻²	I ¹⁻³
Flawless	Internally Flawless	Very Very Slightly Included	Very Slightly Included	Slightly Included	Included

