



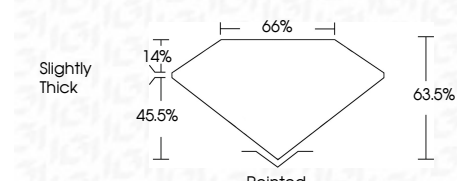
ELECTRONIC COPY

LG794607627
Report verification at igi.org



June 1, 2026
IGI Report Number LG794607627
Description LABORATORY GROWN DIAMOND
Shape and Cutting Style CUT CORNERED RECTANGULAR MODIFIED BRILLIANT
Measurements 9.26 X 6.33 X 4.02 MM

GRADING RESULTS
Carat Weight 2.05 CARATS
Color Grade E
Clarity Grade VVS 2



ADDITIONAL GRADING INFORMATION
Polish EXCELLENT
Symmetry EXCELLENT
Fluorescence NONE
Inscription(s) LG794607627
Comments: This Laboratory Grown Diamond was created by Chemical Vapor Deposition (CVD) growth process. Type IIa



June 1, 2026
IGI Report No LG794607627
CUT CORNERED RECT. MODIFIED BRILLIANT
9.26 X 6.33 X 4.02 MM
2.05 CARATS
E
VVS 2
63.5%
65%
Slightly Thick
Pointed
EXCELLENT
EXCELLENT
NONE
Inscription(s) LG794607627
Comments: This Laboratory Grown Diamond was created by Chemical Vapor Deposition (CVD) growth process. Type IIa

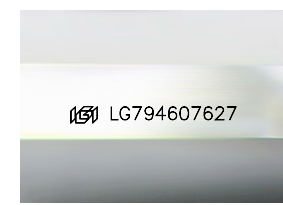
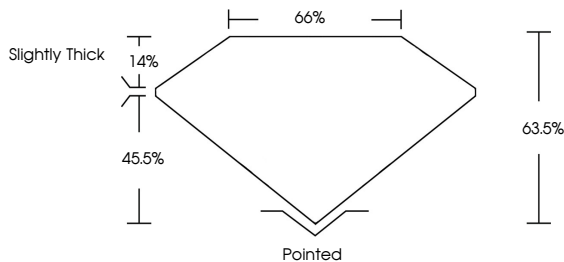
LABORATORY GROWN DIAMOND REPORT

June 1, 2026
IGI Report Number LG794607627
Description LABORATORY GROWN DIAMOND
Shape and Cutting Style CUT CORNERED RECTANGULAR MODIFIED BRILLIANT
Measurements 9.26 X 6.33 X 4.02 MM

GRADING RESULTS
Carat Weight 2.05 CARATS
Color Grade E
Clarity Grade VVS 2

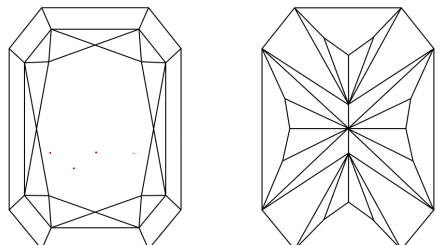
ADDITIONAL GRADING INFORMATION
Polish EXCELLENT
Symmetry EXCELLENT
Fluorescence NONE
Inscription(s) LG794607627
Comments: This Laboratory Grown Diamond was created by Chemical Vapor Deposition (CVD) growth process. Type IIa

PROPORTIONS



Sample Image Used

CLARITY CHARACTERISTICS



KEY TO SYMBOLS
Red symbols indicate internal characteristics.
Green symbols indicate external characteristics.

COLOR

Table with color scale: D, E, F, G, H, I, J, Faint, Very Light, Light

CLARITY

Table with clarity scale: FL, IF, VVS 1-2, VS 1-2, SI 1-2, I 1-3, Flawless, Internally Flawless, Very Very Slightly Included, Very Slightly Included, Slightly Included, Included

