



May 28, 2026

IGI Report Number **LG794607426**

**ROUND BRILLIANT  
LABORATORY GROWN DIAMOND  
5.18 - 5.22 X 3.22 MM**

Carat Weight **0.53 CARAT**  
Color Grade **D**  
Clarity Grade **VS 1**  
Cut Grade **IDEAL**  
Polish **EXCELLENT**  
Symmetry **EXCELLENT**  
Fluorescence **NONE**  
Inscription(s) **IGI LG794607426**

Comments: This Laboratory Grown Diamond was created by Chemical Vapor Deposition (CVD) growth process. Type IIa

**LABORATORY GROWN DIAMOND REPORT**

May 28, 2026  
IGI Report Number **LG794607426**  
Description **LABORATORY GROWN DIAMOND**  
Shape and Cutting Style **ROUND BRILLIANT**  
Measurements **5.18 - 5.22 X 3.22 MM**

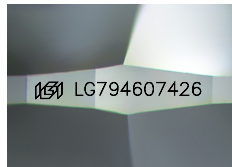
**GRADING RESULTS**

Carat Weight **0.53 CARAT**  
Color Grade **D**  
Clarity Grade **VS 1**  
Cut Grade **IDEAL**

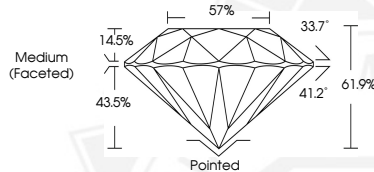
**ADDITIONAL GRADING INFORMATION**

Polish **EXCELLENT**  
Symmetry **EXCELLENT**  
Fluorescence **NONE**  
Inscription(s) **IGI LG794607426**

Comments: This Laboratory Grown Diamond was created by Chemical Vapor Deposition (CVD) growth process. Type IIa



Sample Image Used



May 28, 2026

IGI Report Number **LG794607426**

**ROUND BRILLIANT  
LABORATORY GROWN DIAMOND  
5.18 - 5.22 X 3.22 MM**

Carat Weight **0.53 CARAT**  
Color Grade **D**  
Clarity Grade **VS 1**  
Cut Grade **IDEAL**  
Polish **EXCELLENT**  
Symmetry **EXCELLENT**  
Fluorescence **NONE**  
Inscription(s) **IGI LG794607426**

Comments: This Laboratory Grown Diamond was created by Chemical Vapor Deposition (CVD) growth process. Type IIa



THIS DOCUMENT WAS PRODUCED WITH THE FOLLOWING SECURITY MEASURES: SPECIAL DOCUMENT PAPER, INK SCREENS, WATERMARK, BACKGROUND DESIGNS, HOLOGRAM AND OTHER SECURITY FEATURES NOT LISTED AND DO EXCEED DOCUMENT SECURITY INDUSTRY GUIDELINES.