



ELECTRONIC COPY

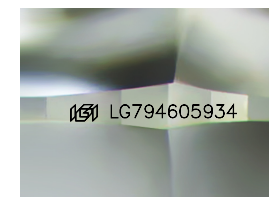
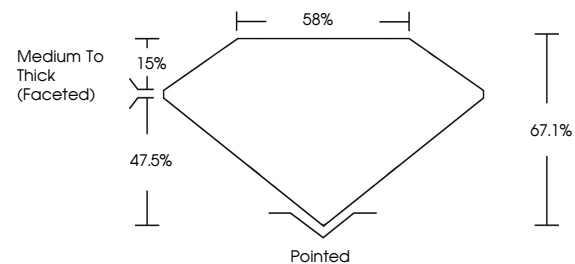
LG794605934
Report verification at igi.org



May 25, 2026
IGI Report Number **LG794605934**
Description **LABORATORY GROWN DIAMOND**
Shape and Cutting Style **CUSHION MODIFIED BRILLIANT**
Measurements **8.85 X 6.62 X 4.44 MM**
GRADING RESULTS
Carat Weight **2.05 CARATS**
Color Grade **E**
Clarity Grade **VS 1**

May 25, 2026
IGI Report Number **LG794605934**
Description **LABORATORY GROWN DIAMOND**
Shape and Cutting Style **CUSHION MODIFIED BRILLIANT**
Measurements **8.85 X 6.62 X 4.44 MM**

PROPORTIONS

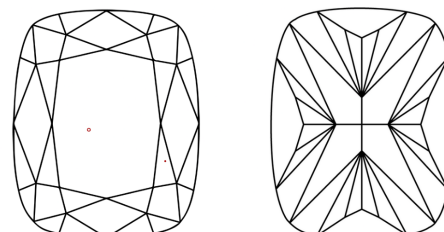


Sample Image Used

GRADING RESULTS

Carat Weight **2.05 CARATS**
Color Grade **E**
Clarity Grade **VS 1**

CLARITY CHARACTERISTICS



KEY TO SYMBOLS

Red symbols indicate internal characteristics.
Green symbols indicate external characteristics.

ADDITIONAL GRADING INFORMATION

Polish **EXCELLENT**
Symmetry **EXCELLENT**
Fluorescence **NONE**
Inscription(s) **IGI LG794605934**

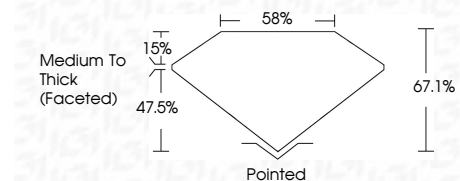
Comments: This Laboratory Grown Diamond was created by Chemical Vapor Deposition (CVD) growth process. Type IIa

COLOR

D E F G H I J Faint Very Light Light

CLARITY

FL	IF	VS ¹⁻²	VS ¹⁻²	SI ¹⁻²	I ¹⁻³
Flawless	Internally Flawless	Very Very Slightly Included	Very Slightly Included	Slightly Included	Included



ADDITIONAL GRADING INFORMATION

Polish **EXCELLENT**
Symmetry **EXCELLENT**
Fluorescence **NONE**
Inscription(s) **IGI LG794605934**
Comments: This Laboratory Grown Diamond was created by Chemical Vapor Deposition (CVD) growth process. Type IIa



May 25, 2026
IGI Report No LG794605934
CUSHION MODIFIED BRILLIANT
8.85 X 6.62 X 4.44 MM
2.05 CARATS
E
VS 1
67.1%
85%
Medium To Thick (Faceted)
Pointed
EXCELLENT
EXCELLENT
NONE
IGI LG794605934
Comments: This Laboratory Grown Diamond was created by Chemical Vapor Deposition (CVD) growth process. Type IIa