



ELECTRONIC COPY

LG794604984
Report verification at igi.org



May 26, 2026

IGI Report Number **LG794604984**

Description **LABORATORY GROWN DIAMOND**

Shape and Cutting Style **PRINCESS CUT**

Measurements **7.12 X 6.89 X 4.73 MM**

GRADING RESULTS

Carat Weight **2.02 CARATS**

Color Grade **FANCY VIVID BLUE**

Clarity Grade **VS 1**

May 26, 2026
IGI Report Number **LG794604984**
Description **LABORATORY GROWN DIAMOND**
Shape and Cutting Style **PRINCESS CUT**
Measurements **7.12 X 6.89 X 4.73 MM**

GRADING RESULTS

Carat Weight **2.02 CARATS**

Color Grade **FANCY VIVID BLUE**

Clarity Grade **VS 1**

ADDITIONAL GRADING INFORMATION

Polish **EXCELLENT**

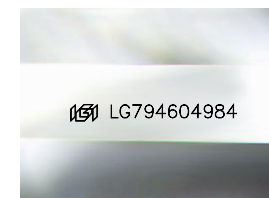
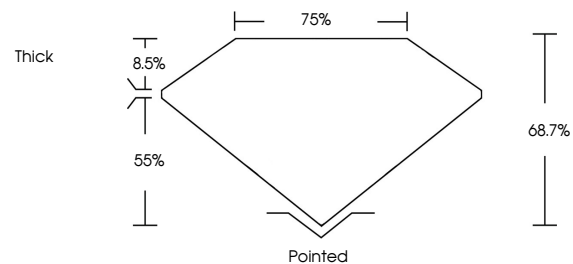
Symmetry **EXCELLENT**

Fluorescence **NONE**

Inscription(s) **IGI LG794604984**

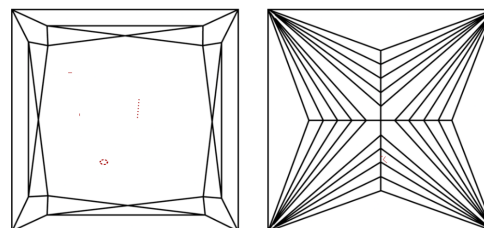
Comments: This Laboratory Grown Diamond was created by Chemical Vapor Deposition (CVD) growth process.
Indications of post-growth treatment.

PROPORTIONS



Sample Image Used

CLARITY CHARACTERISTICS



KEY TO SYMBOLS

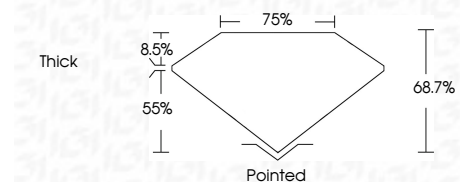
Red symbols indicate internal characteristics.
Green symbols indicate external characteristics.

COLOR

D E F G H I J Faint Very Light Light

CLARITY

FL	IF	VS ¹⁻²	VS ¹⁻²	SI ¹⁻²	I ¹⁻³
Flawless	Internally Flawless	Very Very Slightly Included	Very Slightly Included	Slightly Included	Included



ADDITIONAL GRADING INFORMATION

Polish **EXCELLENT**

Symmetry **EXCELLENT**

Fluorescence **NONE**

Inscription(s) **IGI LG794604984**

Comments: This Laboratory Grown Diamond was created by Chemical Vapor Deposition (CVD) growth process.
Indications of post-growth treatment.



May 26, 2026
IGI Report No **LG794604984**
PRINCESS CUT

2.02 CARATS
Carat Weight
FANCY VIVID BLUE
Color Grade

VS 1
Clarity Grade

68.7%
Depth

75%
Table

Thick
Girdle

Pointed
Culet

EXCELLENT
Polish

EXCELLENT
Symmetry

NONE
Fluorescence

IGI LG794604984
Inscription(s)

Comments: This Laboratory Grown Diamond was created by Chemical Vapor Deposition (CVD) growth process.
Indications of post-growth treatment.