



**ELECTRONIC COPY**

LG794604969  
Report verification at igi.org



May 26, 2026  
IGI Report Number **LG794604969**  
Description **LABORATORY GROWN DIAMOND**

Shape and Cutting Style **TRIANGULAR BRILLIANT**  
Measurements **9.53 X 9.08 X 4.39 MM**

**GRADING RESULTS**  
Carat Weight **2.04 CARATS**  
Color Grade **FANCY LIGHT YELLOW**  
Clarity Grade **VS 1**

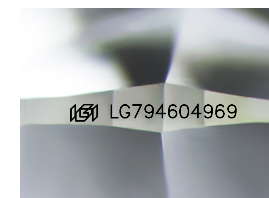
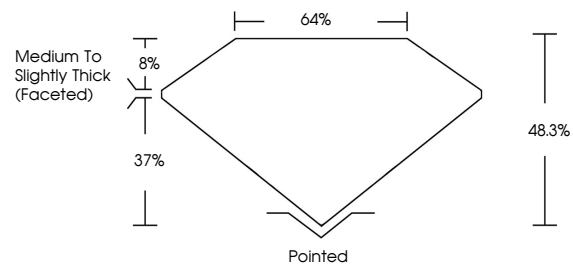
May 26, 2026  
IGI Report Number **LG794604969**  
Description **LABORATORY GROWN DIAMOND**  
Shape and Cutting Style **TRIANGULAR BRILLIANT**  
Measurements **9.53 X 9.08 X 4.39 MM**

**GRADING RESULTS**  
Carat Weight **2.04 CARATS**  
Color Grade **FANCY LIGHT YELLOW**  
Clarity Grade **VS 1**

**ADDITIONAL GRADING INFORMATION**  
Polish **EXCELLENT**  
Symmetry **EXCELLENT**  
Fluorescence **NONE**  
Inscription(s) **IGI LG794604969**

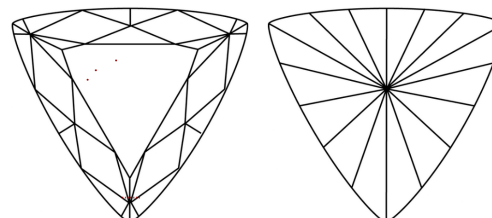
Comments: This Laboratory Grown Diamond was created by Chemical Vapor Deposition (CVD) growth process.

**PROPORTIONS**



Sample Image Used

**CLARITY CHARACTERISTICS**



**KEY TO SYMBOLS**

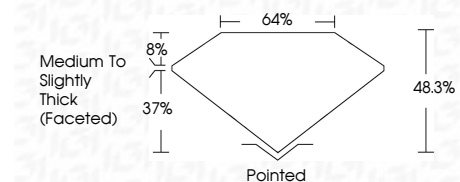
Red symbols indicate internal characteristics.  
Green symbols indicate external characteristics.

**COLOR**

D E F G H I J Faint Very Light Light

**CLARITY**

FL	IF	VS <sup>1-2</sup>	VS <sup>1-2</sup>	SI <sup>1-2</sup>	I <sup>1-3</sup>
Flawless	Internally Flawless	Very Very Slightly Included	Very Slightly Included	Slightly Included	Included



**ADDITIONAL GRADING INFORMATION**

Polish **EXCELLENT**  
Symmetry **EXCELLENT**  
Fluorescence **NONE**  
Inscription(s) **IGI LG794604969**  
Comments: This Laboratory Grown Diamond was created by Chemical Vapor Deposition (CVD) growth process.



May 26, 2026  
IGI Report No **LG794604969**  
**TRIANGULAR BRILLIANT**  
2.04 CARATS  
Carat Weight  
Color Grade **FANCY LIGHT YELLOW**  
Clarity Grade **VS 1**  
Depth **48.3%**  
Table **64%**  
Girdle **Medium to Slightly Thick (Faceted)**  
Culet **Pointed**  
Polish **EXCELLENT**  
Symmetry **EXCELLENT**  
Fluorescence **NONE**  
Inscription(s) **IGI LG794604969**  
Comments: This Laboratory Grown Diamond was created by Chemical Vapor Deposition (CVD) growth process.