



**ELECTRONIC COPY**

LG794604584  
Report verification at igi.org



May 21, 2026  
IGI Report Number **LG794604584**  
Description **LABORATORY GROWN DIAMOND**  
Shape and Cutting Style **CUSHION MODIFIED BRILLIANT**  
Measurements **8.71 X 6.66 X 4.38 MM**  
**GRADING RESULTS**  
Carat Weight **1.95 CARAT**  
Color Grade **FANCY VIVID BLUE**  
Clarity Grade **VVS 2**

**LABORATORY GROWN DIAMOND REPORT**

May 21, 2026  
IGI Report Number **LG794604584**  
Description **LABORATORY GROWN DIAMOND**  
Shape and Cutting Style **CUSHION MODIFIED BRILLIANT**  
Measurements **8.71 X 6.66 X 4.38 MM**

**GRADING RESULTS**

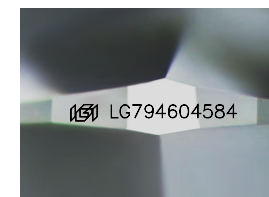
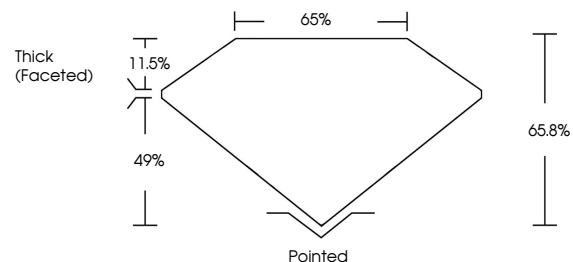
Carat Weight **1.95 CARAT**  
Color Grade **FANCY VIVID BLUE**  
Clarity Grade **VVS 2**

**ADDITIONAL GRADING INFORMATION**

Polish **EXCELLENT**  
Symmetry **EXCELLENT**  
Fluorescence **NONE**  
Inscription(s) **IGI LG794604584**

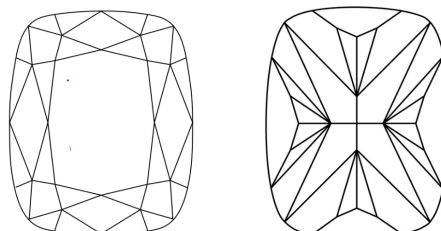
Comments: This Laboratory Grown Diamond was created by Chemical Vapor Deposition (CVD) growth process.  
Indications of post-growth treatment.

**PROPORTIONS**



Sample Image Used

**CLARITY CHARACTERISTICS**



**KEY TO SYMBOLS**

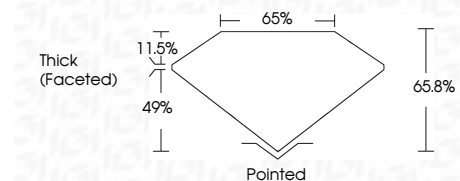
Red symbols indicate internal characteristics.  
Green symbols indicate external characteristics.

**COLOR**

D E F G H I J Faint Very Light Light

**CLARITY**

FL	IF	VVS <sup>1-2</sup>	VS <sup>1-2</sup>	SI <sup>1-2</sup>	I <sup>1-3</sup>
Flawless	Internally Flawless	Very Very Slightly Included	Very Slightly Included	Slightly Included	Included



**ADDITIONAL GRADING INFORMATION**

Polish **EXCELLENT**  
Symmetry **EXCELLENT**  
Fluorescence **NONE**  
Inscription(s) **IGI LG794604584**  
Comments: This Laboratory Grown Diamond was created by Chemical Vapor Deposition (CVD) growth process.  
Indications of post-growth treatment.



May 21, 2026  
IGI Report No **LG794604584**  
**CUSHION MODIFIED BRILLIANT**  
8.71 X 6.66 X 4.38 MM  
1.95 CARAT  
FANCY VIVID BLUE  
VVS 2  
65.8%  
65%  
Thick (Faceted)  
Pointed  
EXCELLENT  
EXCELLENT  
NONE  
IGI LG794604584  
Comments: This Laboratory Grown Diamond was created by Chemical Vapor Deposition (CVD) growth process.  
Indications of post-growth treatment.