



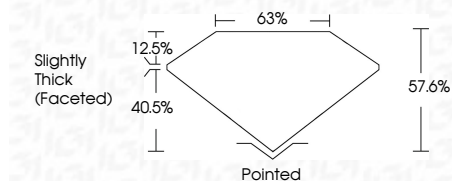
ELECTRONIC COPY

LG794604321
Report verification at igi.org



May 20, 2026
IGI Report Number **LG794604321**
Description **LABORATORY GROWN DIAMOND**
Shape and Cutting Style **TRIANGULAR MODIFIED
BRILLIANT**
Measurements **8.63 X 8.53 X 4.91 MM**

GRADING RESULTS
Carat Weight **2.09 CARATS**
Color Grade **D**
Clarity Grade **VVS 2**



ADDITIONAL GRADING INFORMATION
Polish **EXCELLENT**
Symmetry **EXCELLENT**
Fluorescence **NONE**
Inscription(s) **IGI LG794604321**
Comments: This Laboratory Grown Diamond was created by Chemical Vapor Deposition (CVD) growth process. Type IIa



May 20, 2026
IGI Report No LG794604321
TRIANGULAR MODIFIED BRILLIANT
2.09 CARATS
D
8.63 X 8.53 X 4.91 MM
2.09 CARATS
D
VVS 2
8.63 X 8.53 X 4.91 MM
Slightly Thick (Faceted)
Pointed
EXCELLENT
EXCELLENT
NONE
IGI LG794604321
Comments: This Laboratory Grown Diamond was created by Chemical Vapor Deposition (CVD) growth process. Type IIa

LABORATORY GROWN DIAMOND REPORT

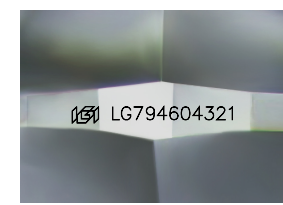
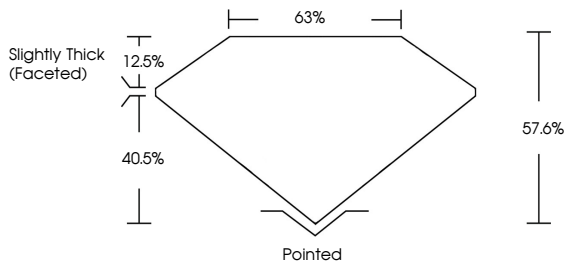
May 20, 2026
IGI Report Number **LG794604321**
Description **LABORATORY GROWN DIAMOND**
Shape and Cutting Style **TRIANGULAR MODIFIED
BRILLIANT**
Measurements **8.63 X 8.53 X 4.91 MM**

GRADING RESULTS
Carat Weight **2.09 CARATS**
Color Grade **D**
Clarity Grade **VVS 2**

ADDITIONAL GRADING INFORMATION
Polish **EXCELLENT**
Symmetry **EXCELLENT**
Fluorescence **NONE**
Inscription(s) **IGI LG794604321**

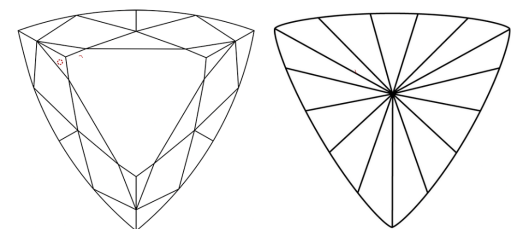
Comments: This Laboratory Grown Diamond was created by Chemical Vapor Deposition (CVD) growth process. Type IIa

PROPORTIONS



Sample Image Used

CLARITY CHARACTERISTICS



KEY TO SYMBOLS
Red symbols indicate internal characteristics.
Green symbols indicate external characteristics.

COLOR

D E F G H I J Faint Very Light Light

CLARITY

FL	IF	VVS ¹⁻²	VS ¹⁻²	SI ¹⁻²	I ¹⁻³
Flawless	Internally Flawless	Very Very Slightly Included	Very Slightly Included	Slightly Included	Included

