



ELECTRONIC COPY

LG794603937
Report verification at igi.org



May 18, 2026

IGI Report Number **LG794603937**

Description **LABORATORY GROWN DIAMOND**

Shape and Cutting Style **CUT CORNERED
RECTANGULAR MODIFIED
BRILLIANT**

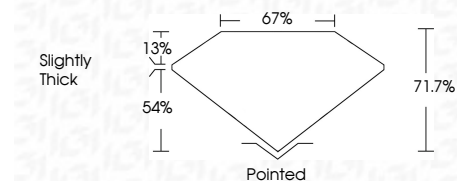
Measurements **8.10 X 5.61 X 4.02 MM**

GRADING RESULTS

Carat Weight **1.59 CARAT**

Color Grade **F**

Clarity Grade **VVS 2**



ADDITIONAL GRADING INFORMATION

Polish **EXCELLENT**

Symmetry **EXCELLENT**

Fluorescence **NONE**

Inscription(s) **IGI LG794603937**

Comments: This Laboratory Grown Diamond was created by Chemical Vapor Deposition (CVD) growth process. Type IIa



May 18, 2026	IGI Report No LG794603937	CUT CORNERED RECT. MODIFIED BRILLIANT	8.10 X 5.61 X 4.02 MM	1.59 CARAT	F	VVS 2	71.7%	67%	Slightly Thick	Pointed	EXCELLENT	EXCELLENT	NONE	IGI LG794603937
<p>Comments: This Laboratory Grown Diamond was created by Chemical Vapor Deposition (CVD) growth process. Type IIa</p>														

LABORATORY GROWN DIAMOND REPORT

May 18, 2026

IGI Report Number **LG794603937**

Description **LABORATORY GROWN DIAMOND**

Shape and Cutting Style **CUT CORNERED RECTANGULAR
MODIFIED BRILLIANT**

Measurements **8.10 X 5.61 X 4.02 MM**

GRADING RESULTS

Carat Weight **1.59 CARAT**

Color Grade **F**

Clarity Grade **VVS 2**

ADDITIONAL GRADING INFORMATION

Polish **EXCELLENT**

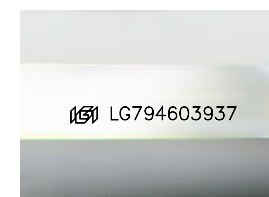
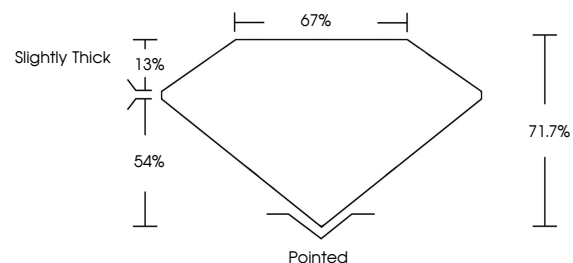
Symmetry **EXCELLENT**

Fluorescence **NONE**

Inscription(s) **IGI LG794603937**

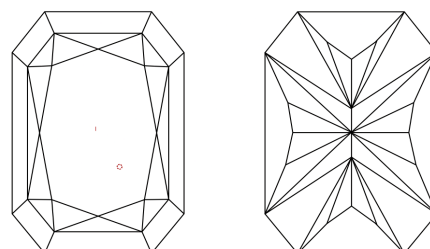
Comments: This Laboratory Grown Diamond was created by Chemical Vapor Deposition (CVD) growth process. Type IIa

PROPORTIONS



Sample Image Used

CLARITY CHARACTERISTICS



KEY TO SYMBOLS

Red symbols indicate internal characteristics.
Green symbols indicate external characteristics.

COLOR

D E F G H I J Faint Very Light Light

CLARITY

FL	IF	VVS ¹⁻²	VS ¹⁻²	SI ¹⁻²	I ¹⁻³
Flawless	Internally Flawless	Very Very Slightly Included	Very Slightly Included	Slightly Included	Included

