



ELECTRONIC COPY

LG794603897
Report verification at igi.org



May 18, 2026

IGI Report Number **LG794603897**

Description **LABORATORY GROWN DIAMOND**

Shape and Cutting Style **PRINCESS CUT**

Measurements **7.08 X 6.93 X 4.62 MM**

GRADING RESULTS

Carat Weight **2.01 CARATS**

Color Grade **FANCY INTENSE PINK**

Clarity Grade **VVS 2**

May 18, 2026
IGI Report Number **LG794603897**
Description **LABORATORY GROWN DIAMOND**
Shape and Cutting Style **PRINCESS CUT**
Measurements **7.08 X 6.93 X 4.62 MM**

GRADING RESULTS

Carat Weight **2.01 CARATS**

Color Grade **FANCY INTENSE PINK**

Clarity Grade **VVS 2**

ADDITIONAL GRADING INFORMATION

Polish **EXCELLENT**

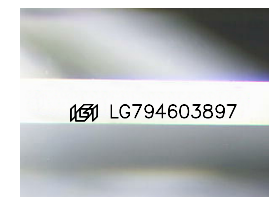
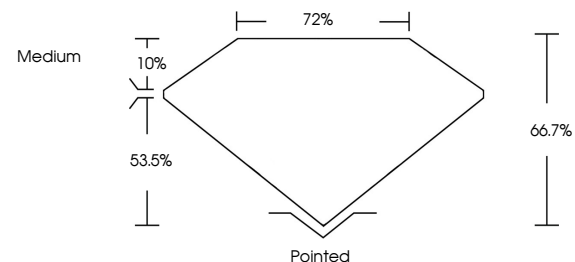
Symmetry **EXCELLENT**

Fluorescence **STRONG**

Inscription(s) **IGI LG794603897**

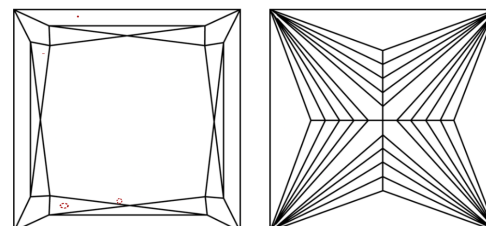
Comments: This Laboratory Grown Diamond was created by Chemical Vapor Deposition (CVD) growth process.
Indications of post-growth treatment.

PROPORTIONS



Sample Image Used

CLARITY CHARACTERISTICS



KEY TO SYMBOLS

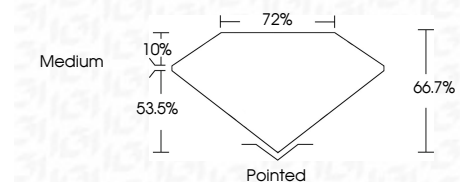
Red symbols indicate internal characteristics.
Green symbols indicate external characteristics.

COLOR

D E F G H I J Faint Very Light Light

CLARITY

FL	IF	VVS ¹⁻²	VS ¹⁻²	SI ¹⁻²	I ¹⁻³
Flawless	Internally Flawless	Very Very Slightly Included	Very Slightly Included	Slightly Included	Included



ADDITIONAL GRADING INFORMATION

Polish **EXCELLENT**

Symmetry **EXCELLENT**

Fluorescence **STRONG**

Inscription(s) **IGI LG794603897**

Comments: This Laboratory Grown Diamond was created by Chemical Vapor Deposition (CVD) growth process.
Indications of post-growth treatment.



May 18, 2026
IGI Report No LG794603897
PRINCESS CUT

2.01 CARATS
FANCY INTENSE PINK

7.08 X 6.93 X 4.62 MM

Color Grade
Clarity Grade
Depth
Table
Girdle

VVS 2
66.7%
72%
Medium

Pointed
EXCELLENT
EXCELLENT
STRONG

Inscription(s)
IGI LG794603897

Comments: This Laboratory Grown Diamond was created by Chemical Vapor Deposition (CVD) growth process.
Indications of post-growth treatment.