



**ELECTRONIC COPY**

LG794603546  
Report verification at igi.org



May 13, 2026

IGI Report Number **LG794603546**

Description **LABORATORY GROWN DIAMOND**

Shape and Cutting Style **PEAR BRILLIANT**

Measurements **18.54 X 5.90 X 2.58 MM**

**GRADING RESULTS**

Carat Weight **2.00 CARATS**

Color Grade **H**

Clarity Grade **VVS 2**

May 13, 2026  
IGI Report Number **LG794603546**  
Description **LABORATORY GROWN DIAMOND**  
Shape and Cutting Style **PEAR BRILLIANT**  
Measurements **18.54 X 5.90 X 2.58 MM**

**GRADING RESULTS**

Carat Weight **2.00 CARATS**

Color Grade **H**

Clarity Grade **VVS 2**

**ADDITIONAL GRADING INFORMATION**

Polish **VERY GOOD**

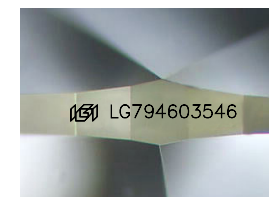
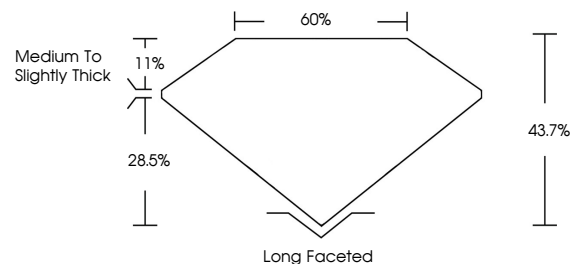
Symmetry **VERY GOOD**

Fluorescence **NONE**

Inscription(s) **IGI LG794603546**

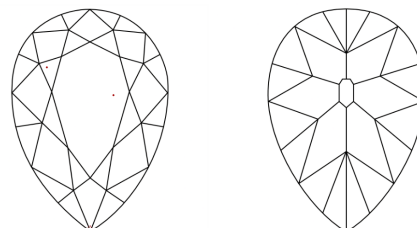
Comments: This Laboratory Grown Diamond was created by Chemical Vapor Deposition (CVD) growth process.  
Type IIa

**PROPORTIONS**



Sample Image Used

**CLARITY CHARACTERISTICS**



**KEY TO SYMBOLS**

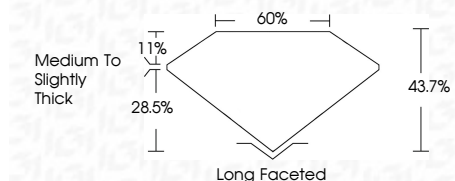
Red symbols indicate internal characteristics.  
Green symbols indicate external characteristics.

**COLOR**

D E F G H I J Faint Very Light Light

**CLARITY**

FL	IF	VVS <sup>1-2</sup>	VS <sup>1-2</sup>	SI <sup>1-2</sup>	I <sup>1-3</sup>
Flawless	Internally Flawless	Very Very Slightly Included	Very Slightly Included	Slightly Included	Included



**ADDITIONAL GRADING INFORMATION**

Polish **VERY GOOD**

Symmetry **VERY GOOD**

Fluorescence **NONE**

Inscription(s) **IGI LG794603546**

Comments: This Laboratory Grown Diamond was created by Chemical Vapor Deposition (CVD) growth process.  
Type IIa



**IGI**



May 13, 2026  
IGI Report No LG794603546  
PEAR BRILLIANT  
2.00 CARATS H  
18.54 X 5.90 X 2.58 MM  
Carat Weight  
Color Grade  
Clarity Grade  
Depth  
Table  
Girdle  
Medium to Slightly Thick  
Culet  
Long Faceted  
Polish  
Symmetry  
Fluorescence  
Inscription(s)  
VERY GOOD  
VERY GOOD  
NONE  
IGI LG794603546  
Comments: This Laboratory Grown Diamond was created by Chemical Vapor Deposition (CVD) growth process.  
Type IIa