



ELECTRONIC COPY

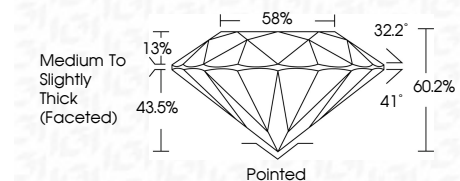
LG794603415
Report verification at igi.org



May 11, 2026
IGI Report Number **LG794603415**
Description **LABORATORY GROWN DIAMOND**
Shape and Cutting Style **ROUND BRILLIANT**
Measurements **6.65 - 6.67 X 4.01 MM**

GRADING RESULTS

Carat Weight **1.08 CARAT**
Color Grade **E**
Clarity Grade **VVS 1**
Cut Grade **EXCELLENT**



ADDITIONAL GRADING INFORMATION

Polish **EXCELLENT**
Symmetry **EXCELLENT**
Fluorescence **NONE**
Inscription(s) **IGI LG794603415**
Comments: This Laboratory Grown Diamond was created by Chemical Vapor Deposition (CVD) growth process. Type IIa



May 11, 2026
IGI Report No LG794603415
ROUND BRILLIANT
6.65 - 6.67 X 4.01 MM
1.08 CARAT
E
Color Grade
VVS 1
Clarity Grade
EXCELLENT
60.2%
88%
Depth
Table
Girdle
Medium To Slightly Thick (Faceted)
Pointed
EXCELLENT
EXCELLENT
NONE
INSCRIPTION(S)
IGI LG794603415
Comments: This Laboratory Grown Diamond was created by Chemical Vapor Deposition (CVD) growth process. Type IIa

May 11, 2026
IGI Report Number **LG794603415**
Description **LABORATORY GROWN DIAMOND**
Shape and Cutting Style **ROUND BRILLIANT**
Measurements **6.65 - 6.67 X 4.01 MM**

GRADING RESULTS

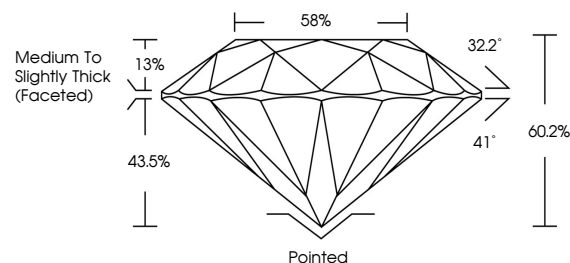
Carat Weight **1.08 CARAT**
Color Grade **E**
Clarity Grade **VVS 1**
Cut Grade **EXCELLENT**

ADDITIONAL GRADING INFORMATION

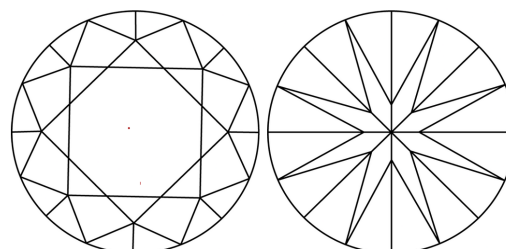
Polish **EXCELLENT**
Symmetry **EXCELLENT**
Fluorescence **NONE**
Inscription(s) **IGI LG794603415**

Comments: This Laboratory Grown Diamond was created by Chemical Vapor Deposition (CVD) growth process. Type IIa

PROPORTIONS

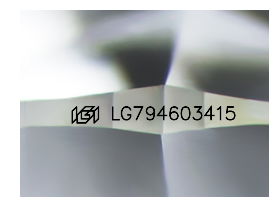


CLARITY CHARACTERISTICS



KEY TO SYMBOLS

Red symbols indicate internal characteristics.
Green symbols indicate external characteristics.



Sample Image Used

COLOR

D E F G H I J Faint Very Light Light

CLARITY

FL	IF	VVS ¹⁻²	VS ¹⁻²	SI ¹⁻²	I ¹⁻³
Flawless	Internally Flawless	Very Very Slightly Included	Very Slightly Included	Slightly Included	Included

