



ELECTRONIC COPY

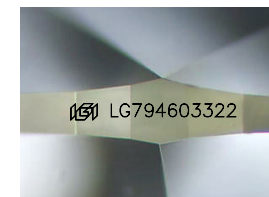
LG794603322
Report verification at igi.org



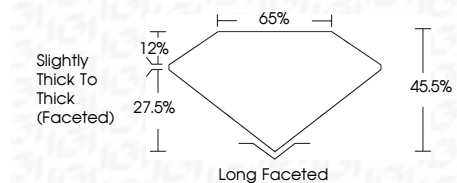
May 11, 2026
IGI Report Number **LG794603322**
Description **LABORATORY GROWN DIAMOND**
Shape and Cutting Style **ANTIQUÉ PEAR CUT**
Measurements **20.04 X 5.16 X 2.35 MM**

GRADING RESULTS

Carat Weight **1.78 CARAT**
Color Grade **G**
Clarity Grade **VS 2**



Sample Image Used



ADDITIONAL GRADING INFORMATION

Polish **EXCELLENT**
Symmetry **EXCELLENT**
Fluorescence **NONE**
Inscription(s) **IGI LG794603322**
Comments: This Laboratory Grown Diamond was created by Chemical Vapor Deposition (CVD) growth process. Type IIa



May 11, 2026
IGI Report No LG794603322
ANTIQUÉ PEAR CUT
20.04 X 5.16 X 2.35 MM
Carat Weight **1.78 CARAT**
Color Grade **G**
Clarity Grade **VS 2**
Depth **45.5%**
Table **27.5%**
Girdle **Slightly Thick To Thick (Faceted)**
Culet **Long Faceted**
Polish **EXCELLENT**
Symmetry **EXCELLENT**
Fluorescence **NONE**
Inscription(s) **IGI LG794603322**
Comments: This Laboratory Grown Diamond was created by Chemical Vapor Deposition (CVD) growth process. Type IIa

LABORATORY GROWN DIAMOND REPORT

May 11, 2026
IGI Report Number **LG794603322**
Description **LABORATORY GROWN DIAMOND**
Shape and Cutting Style **ANTIQUÉ PEAR CUT**
Measurements **20.04 X 5.16 X 2.35 MM**

GRADING RESULTS

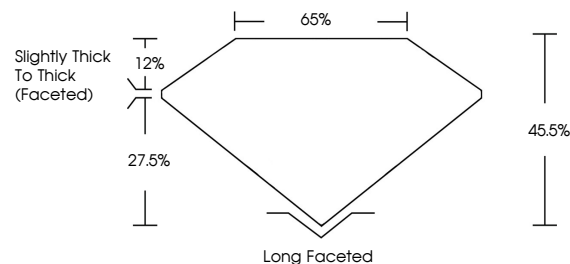
Carat Weight **1.78 CARAT**
Color Grade **G**
Clarity Grade **VS 2**

ADDITIONAL GRADING INFORMATION

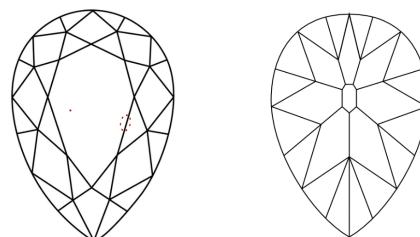
Polish **EXCELLENT**
Symmetry **EXCELLENT**
Fluorescence **NONE**
Inscription(s) **IGI LG794603322**

Comments: This Laboratory Grown Diamond was created by Chemical Vapor Deposition (CVD) growth process. Type IIa

PROPORTIONS



CLARITY CHARACTERISTICS



KEY TO SYMBOLS

Red symbols indicate internal characteristics.
Green symbols indicate external characteristics.

COLOR

D E F G H I J Faint Very Light Light

CLARITY

FL	IF	VS ¹⁻²	VS ¹⁻²	SI ¹⁻²	I ¹⁻³
Flawless	Internally Flawless	Very Very Slightly Included	Very Slightly Included	Slightly Included	Included

