



ELECTRONIC COPY

LG794603185
Report verification at igi.org



May 9, 2026
IGI Report Number LG794603185
Description LABORATORY GROWN DIAMOND
Shape and Cutting Style CUT CORNERED RECTANGULAR MODIFIED BRILLIANT
Measurements 8.42 X 5.79 X 3.71 MM
GRADING RESULTS
Carat Weight 1.53 CARAT
Color Grade F
Clarity Grade VS 1

LABORATORY GROWN DIAMOND REPORT

May 9, 2026
IGI Report Number LG794603185
Description LABORATORY GROWN DIAMOND
Shape and Cutting Style CUT CORNERED RECTANGULAR MODIFIED BRILLIANT
Measurements 8.42 X 5.79 X 3.71 MM

GRADING RESULTS

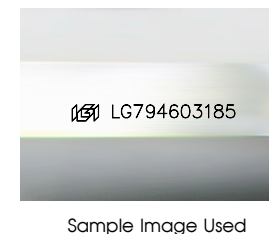
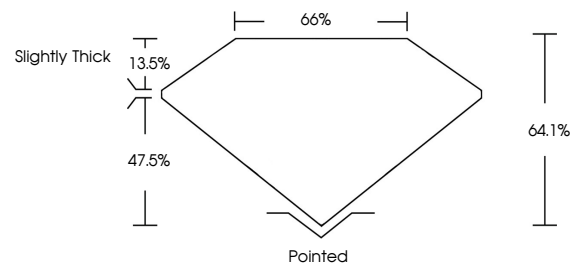
Carat Weight 1.53 CARAT
Color Grade F
Clarity Grade VS 1

ADDITIONAL GRADING INFORMATION

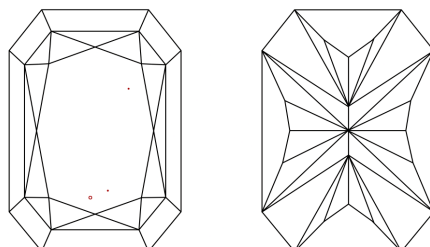
Polish EXCELLENT
Symmetry EXCELLENT
Fluorescence NONE
Inscription(s) LG794603185

Comments: This Laboratory Grown Diamond was created by Chemical Vapor Deposition (CVD) growth process. Type IIa

PROPORTIONS



CLARITY CHARACTERISTICS



KEY TO SYMBOLS

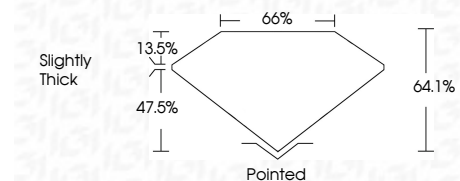
Red symbols indicate internal characteristics.
Green symbols indicate external characteristics.

COLOR

D E F G H I J Faint Very Light Light

CLARITY

FL IF VS 1-2 VS 2-3 SI 1-2 I 1-3
Flawless Internally Flawless Very Very Slightly Included Very Slightly Included Slightly Included Included



ADDITIONAL GRADING INFORMATION

Polish EXCELLENT
Symmetry EXCELLENT
Fluorescence NONE
Inscription(s) LG794603185
Comments: This Laboratory Grown Diamond was created by Chemical Vapor Deposition (CVD) growth process. Type IIa



May 9, 2026
IGI Report No LG794603185
CUT CORNERED RECT. MODIFIED BRILLIANT
8.42 X 5.79 X 3.71 MM
1.53 CARAT
Color Grade F
Clarity Grade VS 1
Depth 64.1%
Table 47.5%
Girdle Slightly Thick
Culet Pointed
Polish EXCELLENT
Symmetry EXCELLENT
Fluorescence NONE
Inscription(s) LG794603185
Comments: This Laboratory Grown Diamond was created by Chemical Vapor Deposition (CVD) growth process. Type IIa