



**ELECTRONIC COPY**

LG794603183  
Report verification at igi.org



May 9, 2026

IGI Report Number **LG794603183**

Description **LABORATORY GROWN DIAMOND**

Shape and Cutting Style **CUT CORNERED  
RECTANGULAR MODIFIED  
BRILLIANT**

Measurements **8.30 X 5.84 X 3.95 MM**

**GRADING RESULTS**

Carat Weight **1.60 CARAT**

Color Grade **F**

Clarity Grade **VS 1**

May 9, 2026

IGI Report Number **LG794603183**

Description **LABORATORY GROWN DIAMOND**

Shape and Cutting Style **CUT CORNERED RECTANGULAR  
MODIFIED BRILLIANT**

Measurements **8.30 X 5.84 X 3.95 MM**

**GRADING RESULTS**

Carat Weight **1.60 CARAT**

Color Grade **F**

Clarity Grade **VS 1**

**ADDITIONAL GRADING INFORMATION**

Polish **EXCELLENT**

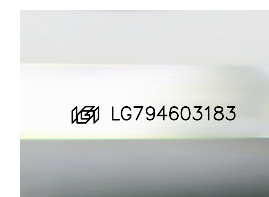
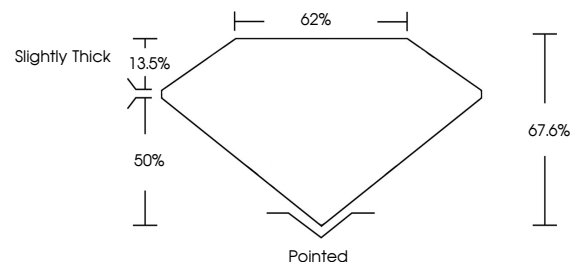
Symmetry **EXCELLENT**

Fluorescence **NONE**

Inscription(s) **IGI LG794603183**

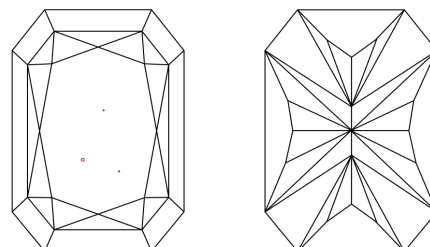
Comments: This Laboratory Grown Diamond was created by Chemical Vapor Deposition (CVD) growth process.  
Type IIa

**PROPORTIONS**



Sample Image Used

**CLARITY CHARACTERISTICS**



**KEY TO SYMBOLS**

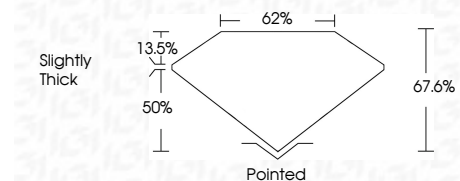
Red symbols indicate internal characteristics.  
Green symbols indicate external characteristics.

**COLOR**

D E F G H I J Faint Very Light Light

**CLARITY**

FL	IF	VS <sup>1-2</sup>	VS <sup>1-2</sup>	SI <sup>1-2</sup>	I <sup>1-3</sup>
Flawless	Internally Flawless	Very Very Slightly Included	Very Slightly Included	Slightly Included	Included



**ADDITIONAL GRADING INFORMATION**

Polish **EXCELLENT**

Symmetry **EXCELLENT**

Fluorescence **NONE**

Inscription(s) **IGI LG794603183**

Comments: This Laboratory Grown Diamond was created by Chemical Vapor Deposition (CVD) growth process.  
Type IIa



**IGI**



May 9, 2026	IGI Report No LG794603183	CUT CORNERED RECT. MODIFIED BRILLIANT	8.30 X 5.84 X 3.95 MM	1.60 CARAT	F	VS 1	67.6%	62%	Slightly Thick	Pointed	EXCELLENT	EXCELLENT	NONE	IGI LG794603183
				Carat Weight	Color Grade	Clarity Grade	Table	Girdle		Culet	Polish	Symmetry	Fluorescence	Inscription(s)

Comments: This Laboratory Grown Diamond was created by Chemical Vapor Deposition (CVD) growth process.  
Type IIa