



ELECTRONIC COPY

LG794603162
Report verification at igi.org



May 9, 2026
IGI Report Number LG794603162
Description LABORATORY GROWN DIAMOND
Shape and Cutting Style CUT CORNERED SQUARE MIXED CUT
Measurements 7.32 X 7.31 X 4.97 MM
GRADING RESULTS
Carat Weight 2.50 CARATS
Color Grade F
Clarity Grade VVS 2

LABORATORY GROWN DIAMOND REPORT

May 9, 2026
IGI Report Number LG794603162
Description LABORATORY GROWN DIAMOND
Shape and Cutting Style CUT CORNERED SQUARE MIXED CUT
Measurements 7.32 X 7.31 X 4.97 MM

GRADING RESULTS

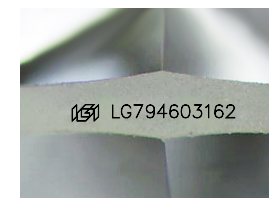
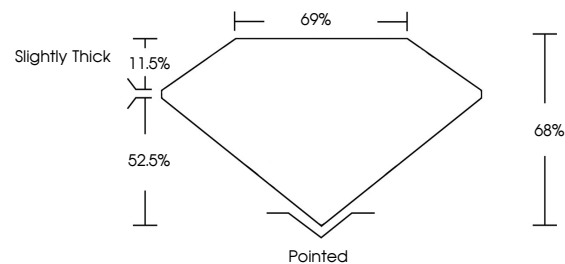
Carat Weight 2.50 CARATS
Color Grade F
Clarity Grade VVS 2

ADDITIONAL GRADING INFORMATION

Polish EXCELLENT
Symmetry EXCELLENT
Fluorescence NONE
Inscription(s) IGI LG794603162

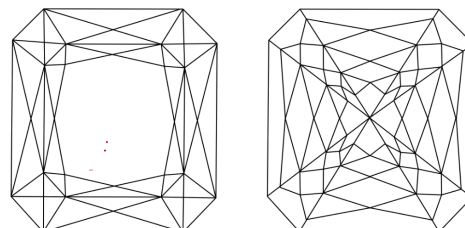
Comments: This Laboratory Grown Diamond was created by Chemical Vapor Deposition (CVD) growth process. Type IIa

PROPORTIONS



Sample Image Used

CLARITY CHARACTERISTICS



KEY TO SYMBOLS

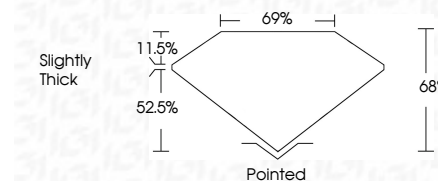
Red symbols indicate internal characteristics.
Green symbols indicate external characteristics.

COLOR

D E F G H I J Faint Very Light Light

CLARITY

FL IF VVS 1-2 VS 1-2 SI 1-2 I 1-3
Flawless Internally Flawless Very Very Slightly Included Very Slightly Included Slightly Included Included



ADDITIONAL GRADING INFORMATION

Polish EXCELLENT
Symmetry EXCELLENT
Fluorescence NONE
Inscription(s) IGI LG794603162
Comments: This Laboratory Grown Diamond was created by Chemical Vapor Deposition (CVD) growth process. Type IIa



May 9, 2026
IGI Report No LG794603162
CUT CORNERED SQUARE MIXED CUT
2.50 CARATS F
7.32 X 7.31 X 4.97 MM
Color Grade VVS 2
Depth 68%
Table 11.5%
Girdle Slightly Thick
Culet Pointed
Polish EXCELLENT
Symmetry EXCELLENT
Fluorescence NONE
Inscription(s) IGI LG794603162
Comments: This Laboratory Grown Diamond was created by Chemical Vapor Deposition (CVD) growth process. Type IIa