



ELECTRONIC COPY

LG794603036
Report verification at igi.org



May 8, 2026

IGI Report Number **LG794603036**

Description **LABORATORY GROWN DIAMOND**

Shape and Cutting Style **ROUND BRILLIANT**

Measurements **6.38 - 6.42 X 3.95 MM**

GRADING RESULTS

Carat Weight **1.00 CARAT**

Color Grade **FANCY VIVID PINK**

Clarity Grade **VS 2**

Cut Grade **EXCELLENT**

May 8, 2026

IGI Report Number **LG794603036**

Description **LABORATORY GROWN DIAMOND**

Shape and Cutting Style **ROUND BRILLIANT**

Measurements **6.38 - 6.42 X 3.95 MM**

GRADING RESULTS

Carat Weight **1.00 CARAT**

Color Grade **FANCY VIVID PINK**

Clarity Grade **VS 2**

Cut Grade **EXCELLENT**

ADDITIONAL GRADING INFORMATION

Polish **EXCELLENT**

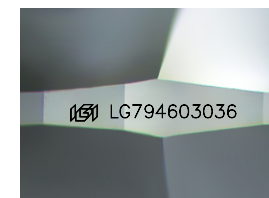
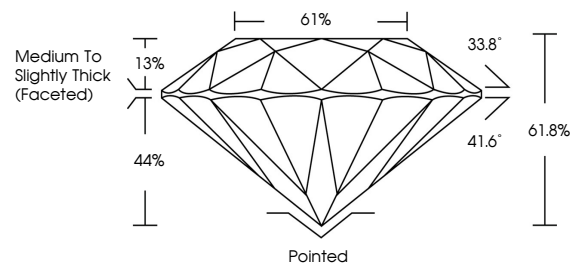
Symmetry **EXCELLENT**

Fluorescence **SLIGHT**

Inscription(s) **LG794603036**

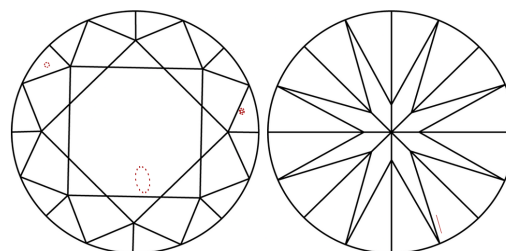
Comments: This Laboratory Grown Diamond was created by Chemical Vapor Deposition (CVD) growth process.
Indications of post-growth treatment.

PROPORTIONS



Sample Image Used

CLARITY CHARACTERISTICS



KEY TO SYMBOLS

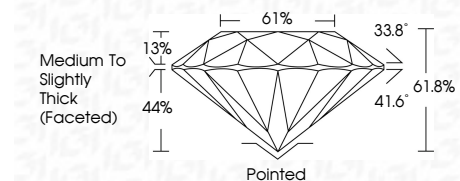
Red symbols indicate internal characteristics.
Green symbols indicate external characteristics.

COLOR

D E F G H I J Faint Very Light Light

CLARITY

FL	IF	VS ¹⁻²	VS ¹⁻²	SI ¹⁻²	I ¹⁻³
Flawless	Internally Flawless	Very Very Slightly Included	Very Slightly Included	Slightly Included	Included



ADDITIONAL GRADING INFORMATION

Polish **EXCELLENT**

Symmetry **EXCELLENT**

Fluorescence **SLIGHT**

Inscription(s) **LG794603036**

Comments: This Laboratory Grown Diamond was created by Chemical Vapor Deposition (CVD) growth process.
Indications of post-growth treatment.



May 8, 2026
IGI Report No **LG794603036**
ROUND BRILLIANT
6.38 - 6.42 X 3.95 MM
Carat Weight **1.00 CARAT**
Color Grade **FANCY VIVID PINK**
Clarity Grade **VS 2**
Cut Grade **EXCELLENT**
Depth **61.8%**
Table **61%**
Girdle **Medium To Slightly Thick (Faceted)**
Culet **Pointed**
Polish **EXCELLENT**
Symmetry **EXCELLENT**
Fluorescence **SLIGHT**
Inscription(s) **LG794603036**
Comments: This Laboratory Grown Diamond was created by Chemical Vapor Deposition (CVD) growth process.
Indications of post-growth treatment.