



ELECTRONIC COPY

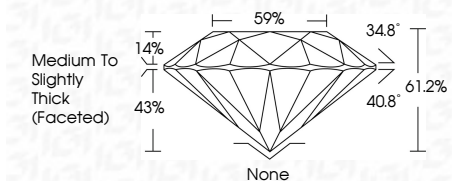
LG794602624
Report verification at igi.org



May 7, 2026
IGI Report Number **LG794602624**
Description **LABORATORY GROWN DIAMOND**
Shape and Cutting Style **ROUND BRILLIANT**
Measurements **6.99 - 7.12 X 4.32 MM**

GRADING RESULTS

Carat Weight **1.34 CARAT**
Color Grade **I**
Clarity Grade **SI 1**
Cut Grade **IDEAL**

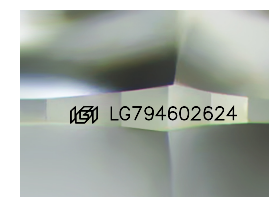


ADDITIONAL GRADING INFORMATION

Polish **VERY GOOD**
Symmetry **VERY GOOD**
Fluorescence **NONE**
Inscription(s) **IGI LG794602624**
Comments: This Laboratory Grown Diamond was created by Chemical Vapor Deposition (CVD) growth process. Type IIa

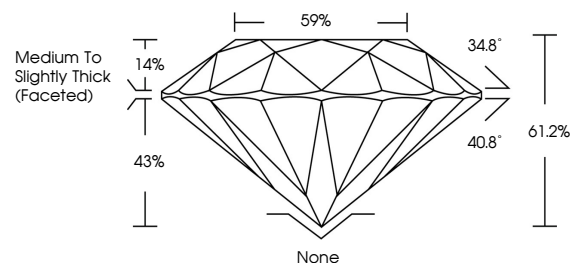


May 7, 2026
IGI Report No **LG794602624**
ROUND BRILLIANT
6.99 - 7.12 X 4.32 MM
1.34 CARAT
Color Grade **I**
Clarity Grade **SI 1**
Depth **IDEAL**
Table **61.2%**
Girdle **None To Slightly Thick (Faceted)**
Culet **None**
Polish **VERY GOOD**
Symmetry **VERY GOOD**
Fluorescence **NONE**
Inscription(s) **IGI LG794602624**
Comments: This Laboratory Grown Diamond was created by Chemical Vapor Deposition (CVD) growth process. Type IIa

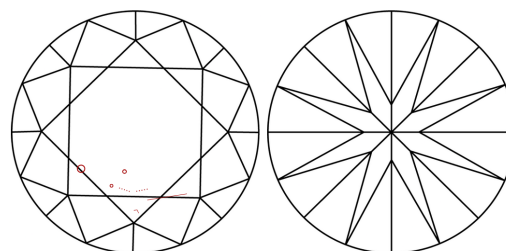


Sample Image Used

PROPORTIONS



CLARITY CHARACTERISTICS



KEY TO SYMBOLS

Red symbols indicate internal characteristics.
Green symbols indicate external characteristics.

COLOR

D E F G H I J Faint Very Light Light

CLARITY

FL	IF	VS ¹⁻²	VS ¹⁻²	SI ¹⁻²	I ¹⁻³
Flawless	Internally Flawless	Very Very Slightly Included	Very Slightly Included	Slightly Included	Included

