



ELECTRONIC COPY

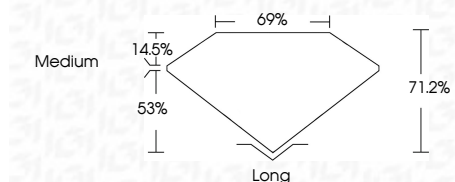
LG794602596
Report verification at igi.org



May 20, 2026
IGI Report Number **LG794602596**
Description **LABORATORY GROWN DIAMOND**
Shape and Cutting Style **SQUARE MIXED CUT**
Measurements **6.10 X 6.04 X 4.30 MM**

GRADING RESULTS

Carat Weight **1.59 CARAT**
Color Grade **E**
Clarity Grade **VVS 1**

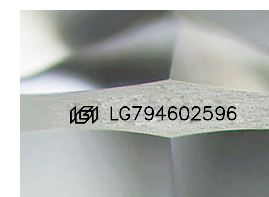


ADDITIONAL GRADING INFORMATION

Polish **EXCELLENT**
Symmetry **EXCELLENT**
Fluorescence **NONE**
Inscription(s) **(IGI) LG794602596**
Comments: This Laboratory Grown Diamond was created by Chemical Vapor Deposition (CVD) growth process. Type IIa

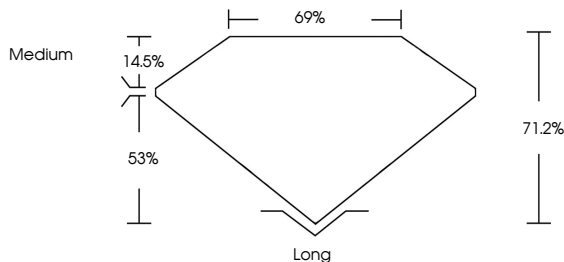


May 20, 2026
IGI Report No LG794602596
SQUARE MIXED CUT
6.10 X 6.04 X 4.30 MM
1.59 CARAT
E
VVS 1
71.2%
53%
Medium
Long
EXCELLENT
EXCELLENT
NONE
(IGI) LG794602596
Comments: This Laboratory Grown Diamond was created by Chemical Vapor Deposition (CVD) growth process. Type IIa

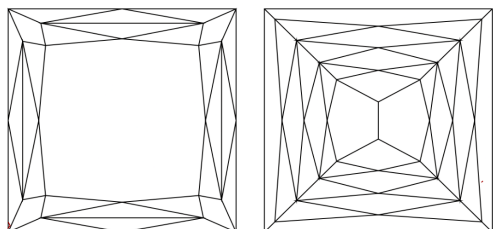


Sample Image Used

PROPORTIONS



CLARITY CHARACTERISTICS



KEY TO SYMBOLS

Red symbols indicate internal characteristics.
Green symbols indicate external characteristics.

COLOR

D E F G H I J Faint Very Light Light

CLARITY

FL	IF	VVS ¹⁻²	VS ¹⁻²	SI ¹⁻²	I ¹⁻³
Flawless	Internally Flawless	Very Very Slightly Included	Very Slightly Included	Slightly Included	Included



May 20, 2026
IGI Report Number **LG794602596**
Description **LABORATORY GROWN DIAMOND**
Shape and Cutting Style **SQUARE MIXED CUT**
Measurements **6.10 X 6.04 X 4.30 MM**
GRADING RESULTS
Carat Weight **1.59 CARAT**
Color Grade **E**
Clarity Grade **VVS 1**
ADDITIONAL GRADING INFORMATION
Polish **EXCELLENT**
Symmetry **EXCELLENT**
Fluorescence **NONE**
Inscription(s) **(IGI) LG794602596**

Comments: This Laboratory Grown Diamond was created by Chemical Vapor Deposition (CVD) growth process. Type IIa