



ELECTRONIC COPY

LG794602444
Report verification at igi.org



May 7, 2026

IGI Report Number **LG794602444**

Description **LABORATORY GROWN DIAMOND**

Shape and Cutting Style **PENTAGONAL STEP CUT**

Measurements **15.61 X 8.50 X 3.72 MM**

GRADING RESULTS

Carat Weight **3.52 CARATS**

Color Grade **H**

Clarity Grade **VS 2**

May 7, 2026
IGI Report Number **LG794602444**
Description **LABORATORY GROWN DIAMOND**
Shape and Cutting Style **PENTAGONAL STEP CUT**
Measurements **15.61 X 8.50 X 3.72 MM**

GRADING RESULTS

Carat Weight **3.52 CARATS**

Color Grade **H**

Clarity Grade **VS 2**

ADDITIONAL GRADING INFORMATION

Polish **EXCELLENT**

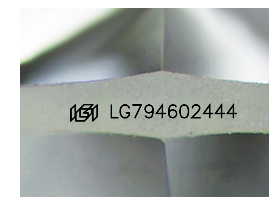
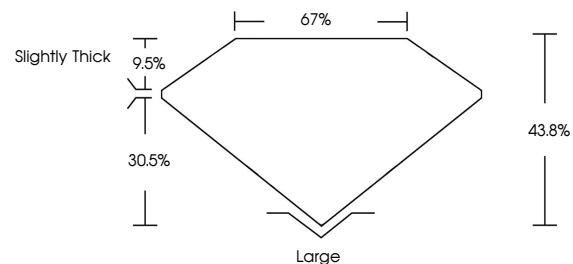
Symmetry **EXCELLENT**

Fluorescence **NONE**

Inscription(s) **IGI LG794602444**

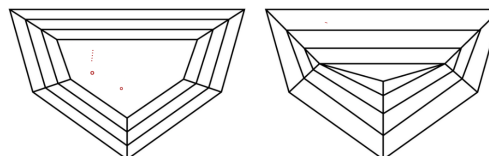
Comments: This Laboratory Grown Diamond was created by Chemical Vapor Deposition (CVD) growth process.
Type IIa

PROPORTIONS



Sample Image Used

CLARITY CHARACTERISTICS



KEY TO SYMBOLS

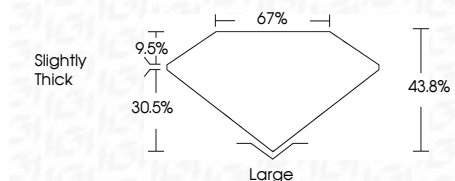
Red symbols indicate internal characteristics.
Green symbols indicate external characteristics.

COLOR

D E F G H I J Faint Very Light Light

CLARITY

| FL | IF | VS ¹⁻² | VS ¹⁻² | SI ¹⁻² | I ¹⁻³ |
|----------|---------------------|-----------------------------|------------------------|-------------------|------------------|
| Flawless | Internally Flawless | Very Very Slightly Included | Very Slightly Included | Slightly Included | Included |



ADDITIONAL GRADING INFORMATION

Polish **EXCELLENT**

Symmetry **EXCELLENT**

Fluorescence **NONE**

Inscription(s) **IGI LG794602444**

Comments: This Laboratory Grown Diamond was created by Chemical Vapor Deposition (CVD) growth process.
Type IIa



IGI



May 7, 2026
IGI Report No **LG794602444**
PENTAGONAL STEP CUT
15.61 X 8.50 X 3.72 MM
Carat Weight **3.52 CARATS**
Color Grade **H**
Clarity Grade **VS 2**
Depth **43.8%**
Table **67%**
Girdle **Slightly Thick**
Culet **Large**
Polish **EXCELLENT**
Symmetry **EXCELLENT**
Fluorescence **NONE**
Inscription(s) **IGI LG794602444**
Comments: This Laboratory Grown Diamond was created by Chemical Vapor Deposition (CVD) growth process.
Type IIa