



ELECTRONIC COPY

LG794602323
Report verification at igi.org



May 8, 2026
IGI Report Number **LG794602323**
Description **LABORATORY GROWN DIAMOND**
Shape and Cutting Style **ROUND BRILLIANT**
Measurements **8.67 - 8.73 X 5.38 MM**
GRADING RESULTS
Carat Weight **2.51 CARATS**
Color Grade **FANCY LIGHT YELLOW**
Clarity Grade **VS 1**
Cut Grade **IDEAL**

May 8, 2026
IGI Report Number **LG794602323**
Description **LABORATORY GROWN DIAMOND**
Shape and Cutting Style **ROUND BRILLIANT**
Measurements **8.67 - 8.73 X 5.38 MM**

GRADING RESULTS

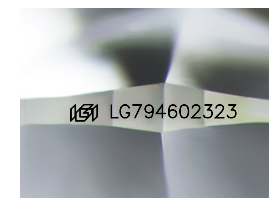
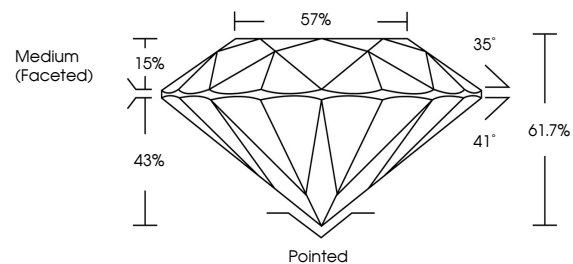
Carat Weight **2.51 CARATS**
Color Grade **FANCY LIGHT YELLOW**
Clarity Grade **VS 1**
Cut Grade **IDEAL**

ADDITIONAL GRADING INFORMATION

Polish **EXCELLENT**
Symmetry **EXCELLENT**
Fluorescence **NONE**
Inscription(s) **IGI LG794602323**

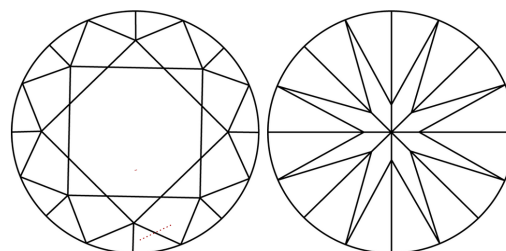
Comments: This Laboratory Grown Diamond was created by Chemical Vapor Deposition (CVD) growth process.

PROPORTIONS



Sample Image Used

CLARITY CHARACTERISTICS



KEY TO SYMBOLS

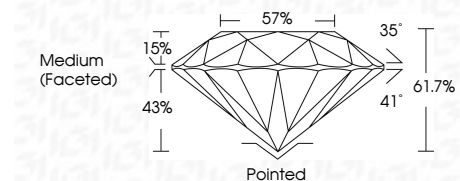
Red symbols indicate internal characteristics.
Green symbols indicate external characteristics.

COLOR

D E F G H I J Faint Very Light Light

CLARITY

FL	IF	VS ¹⁻²	VS ¹⁻²	SI ¹⁻²	I ¹⁻³
Flawless	Internally Flawless	Very Very Slightly Included	Very Slightly Included	Slightly Included	Included



ADDITIONAL GRADING INFORMATION

Polish **EXCELLENT**
Symmetry **EXCELLENT**
Fluorescence **NONE**
Inscription(s) **IGI LG794602323**
Comments: This Laboratory Grown Diamond was created by Chemical Vapor Deposition (CVD) growth process.



May 8, 2026
IGI Report No LG794602323
ROUND BRILLIANT
8.67 - 8.73 X 5.38 MM
2.51 CARATS
FANCY LIGHT YELLOW
VS 1
IDEAL
61.7%
57%
Medium (Faceted)

Culet	Pointed
Polish	EXCELLENT
Symmetry	EXCELLENT
Fluorescence	NONE
Inscription(s)	IGI LG794602323

Comments: This Laboratory Grown Diamond was created by Chemical Vapor Deposition (CVD) growth process.