



**ELECTRONIC COPY**

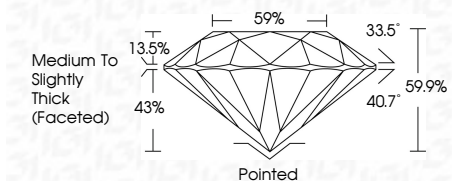
LG794602302  
Report verification at igi.org



May 7, 2026  
IGI Report Number **LG794602302**  
Description **LABORATORY GROWN DIAMOND**  
Shape and Cutting Style **ROUND BRILLIANT**  
Measurements **6.95 - 6.98 X 4.17 MM**

**GRADING RESULTS**

Carat Weight **1.25 CARAT**  
Color Grade **FANCY INTENSE PINK**  
Clarity Grade **VVS 2**  
Cut Grade **IDEAL**



**ADDITIONAL GRADING INFORMATION**

Polish **EXCELLENT**  
Symmetry **EXCELLENT**  
Fluorescence **SLIGHT**  
Inscription(s) **IGI LG794602302**  
Comments: This Laboratory Grown Diamond was created by Chemical Vapor Deposition (CVD) growth process. Indications of post-growth treatment.



May 7, 2026  
IGI Report No LG794602302  
**ROUND BRILLIANT**  
**6.95 - 6.98 X 4.17 MM**  
Carat Weight **1.25 CARAT**  
Color Grade **FANCY INTENSE PINK**  
Clarity Grade **VVS 2**  
Cut Grade **IDEAL**  
Depth **59.9%**  
Table **59%**  
Girdle **Medium To Slightly Thick (Faceted)**  
Culet **Pointed**  
Polish **EXCELLENT**  
Symmetry **EXCELLENT**  
Fluorescence **SLIGHT**  
Inscription(s) **IGI LG794602302**  
Comments: This Laboratory Grown Diamond was created by Chemical Vapor Deposition (CVD) growth process. Indications of post-growth treatment.

May 7, 2026  
IGI Report Number **LG794602302**  
Description **LABORATORY GROWN DIAMOND**  
Shape and Cutting Style **ROUND BRILLIANT**  
Measurements **6.95 - 6.98 X 4.17 MM**

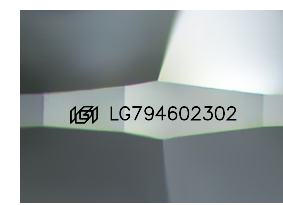
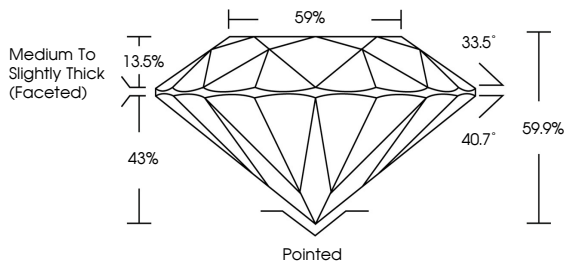
**GRADING RESULTS**

Carat Weight **1.25 CARAT**  
Color Grade **FANCY INTENSE PINK**  
Clarity Grade **VVS 2**  
Cut Grade **IDEAL**

**ADDITIONAL GRADING INFORMATION**

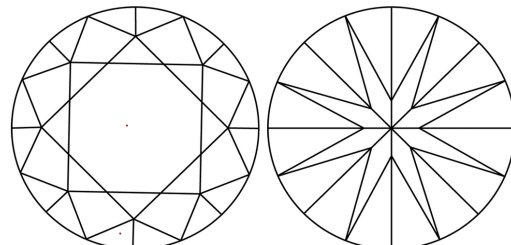
Polish **EXCELLENT**  
Symmetry **EXCELLENT**  
Fluorescence **SLIGHT**  
Inscription(s) **IGI LG794602302**  
Comments: This Laboratory Grown Diamond was created by Chemical Vapor Deposition (CVD) growth process. Indications of post-growth treatment.

**PROPORTIONS**



Sample Image Used

**CLARITY CHARACTERISTICS**



**KEY TO SYMBOLS**

Red symbols indicate internal characteristics.  
Green symbols indicate external characteristics.

**COLOR**

D E F G H I J Faint Very Light Light

**CLARITY**

FL IF VVS<sup>1-2</sup> VS<sup>1-2</sup> SI<sup>1-2</sup> I<sup>1-3</sup>  
Flawless Internally Flawless Very Very Slightly Included Very Slightly Included Slightly Included Included

