



ELECTRONIC COPY

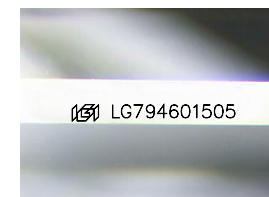
LG794601505
Report verification at igi.org



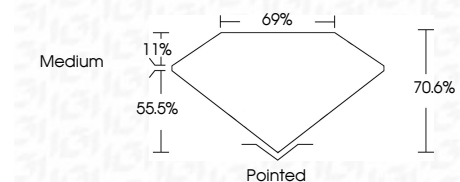
April 27, 2026
IGI Report Number **LG794601505**
Description **LABORATORY GROWN DIAMOND**

Shape and Cutting Style **PRINCESS CUT**
Measurements **7.30 X 7.22 X 5.10 MM**

GRADING RESULTS
Carat Weight **2.37 CARATS**
Color Grade **E**
Clarity Grade **VS 2**



Sample Image Used



ADDITIONAL GRADING INFORMATION
Polish **EXCELLENT**
Symmetry **EXCELLENT**
Fluorescence **NONE**
Inscription(s) **IGI LG794601505**
Comments: This Laboratory Grown Diamond was created by Chemical Vapor Deposition (CVD) growth process. Type IIa



April 27, 2026
IGI Report No **LG794601505**
PRINCESS CUT
7.30 X 7.22 X 5.10 MM
2.37 CARATS
E
VS 2
70.6%
69%
Medium
Pointed
EXCELLENT
EXCELLENT
NONE
IGI LG794601505
Comments: This Laboratory Grown Diamond was created by Chemical Vapor Deposition (CVD) growth process. Type IIa

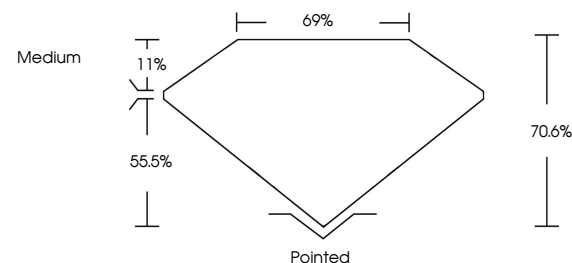
April 27, 2026
IGI Report Number **LG794601505**
Description **LABORATORY GROWN DIAMOND**
Shape and Cutting Style **PRINCESS CUT**
Measurements **7.30 X 7.22 X 5.10 MM**

GRADING RESULTS
Carat Weight **2.37 CARATS**
Color Grade **E**
Clarity Grade **VS 2**

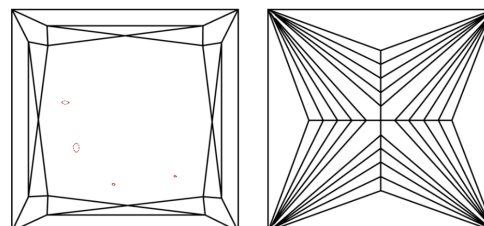
ADDITIONAL GRADING INFORMATION
Polish **EXCELLENT**
Symmetry **EXCELLENT**
Fluorescence **NONE**
Inscription(s) **IGI LG794601505**

Comments: This Laboratory Grown Diamond was created by Chemical Vapor Deposition (CVD) growth process. Type IIa

PROPORTIONS



CLARITY CHARACTERISTICS



KEY TO SYMBOLS

Red symbols indicate internal characteristics.
Green symbols indicate external characteristics.

COLOR

D E F G H I J Faint Very Light Light

CLARITY

FL	IF	VS ¹⁻²	VS ¹⁻²	SI ¹⁻²	I ¹⁻³
Flawless	Internally Flawless	Very Very Slightly Included	Very Slightly Included	Slightly Included	Included

