



ELECTRONIC COPY

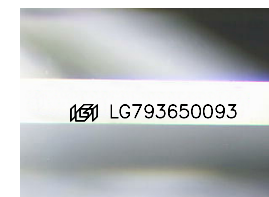
LG793650093
Report verification at igi.org



April 24, 2026
IGI Report Number **LG793650093**
Description **LABORATORY GROWN DIAMOND**

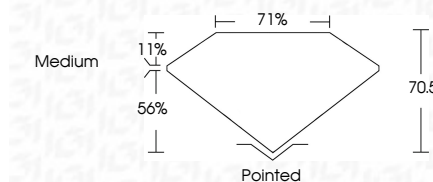
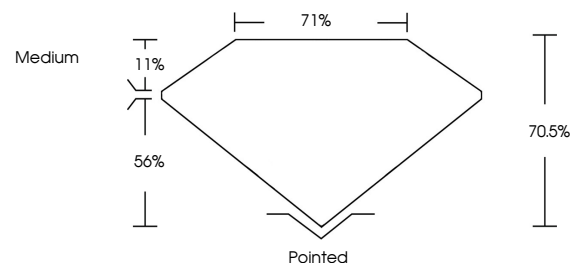
Shape and Cutting Style **PRINCESS CUT**
Measurements **10.15 X 9.90 X 6.98 MM**

GRADING RESULTS
Carat Weight **6.07 CARATS**
Color Grade **F**
Clarity Grade **VVS 2**

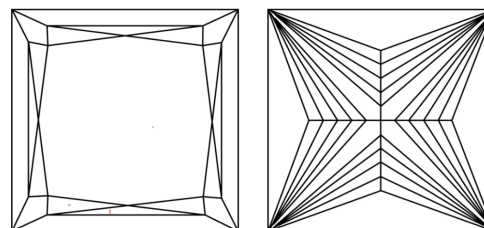


Sample Image Used

PROPORTIONS



CLARITY CHARACTERISTICS



KEY TO SYMBOLS

Red symbols indicate internal characteristics.
Green symbols indicate external characteristics.

COLOR

D E F G H I J Faint Very Light Light

CLARITY

FL	IF	VVS ¹⁻²	VS ¹⁻²	SI ¹⁻²	I ¹⁻³
Flawless	Internally Flawless	Very Very Slightly Included	Very Slightly Included	Slightly Included	Included

ADDITIONAL GRADING INFORMATION

Polish **EXCELLENT**
Symmetry **EXCELLENT**
Fluorescence **NONE**
Inscription(s) **IGI LG793650093**
Comments: This Laboratory Grown Diamond was created by Chemical Vapor Deposition (CVD) growth process. Type IIa



IGI



April 24, 2026
IGI Report No. LG793650093
PRINCESS CUT
10.15 X 9.90 X 6.98 MM
6.07 CARATS
Color Grade **F**
Clarity Grade **VVS 2**
Depth **70.5%**
Table **71%**
Girdle **Medium**
Culet **Pointed**
Polish **EXCELLENT**
Symmetry **EXCELLENT**
Fluorescence **NONE**
Inscription(s) **IGI LG793650093**
Comments: This Laboratory Grown Diamond was created by Chemical Vapor Deposition (CVD) growth process. Type IIa