



**ELECTRONIC COPY**

LG793649804  
Report verification at igi.org



April 24, 2026

IGI Report Number **LG793649804**

Description **LABORATORY GROWN DIAMOND**

Shape and Cutting Style **PEAR BRILLIANT**

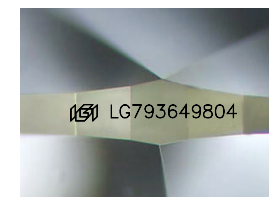
Measurements **8.81 X 5.52 X 3.50 MM**

**GRADING RESULTS**

Carat Weight **1.01 CARAT**

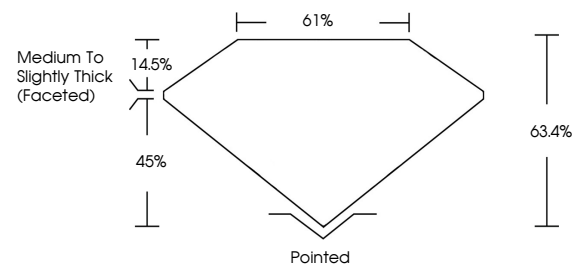
Color Grade **D**

Clarity Grade **VS 1**

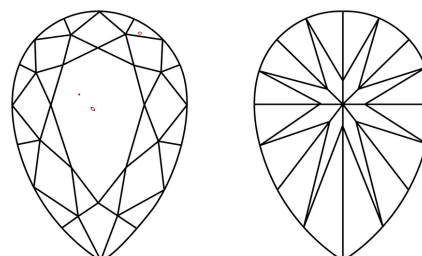


Sample Image Used

**PROPORTIONS**



**CLARITY CHARACTERISTICS**



**KEY TO SYMBOLS**

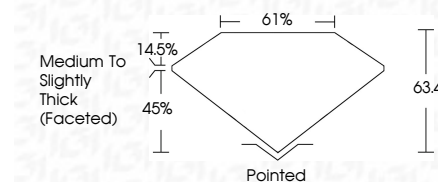
Red symbols indicate internal characteristics.  
Green symbols indicate external characteristics.

**COLOR**

D E F G H I J Faint Very Light Light

**CLARITY**

FL	IF	VS <sup>1-2</sup>	VS <sup>1-2</sup>	SI <sup>1-2</sup>	I <sup>1-3</sup>
Flawless	Internally Flawless	Very Very Slightly Included	Very Slightly Included	Slightly Included	Included



**ADDITIONAL GRADING INFORMATION**

Polish **EXCELLENT**

Symmetry **EXCELLENT**

Fluorescence **NONE**

Inscription(s) **IGI LG793649804**

Comments: This Laboratory Grown Diamond was created by Chemical Vapor Deposition (CVD) growth process. Type IIa



**IGI**



April 24, 2026  
IGI Report No LG793649804  
**PEAR BRILLIANT**  
8.81 X 5.52 X 3.50 MM  
Carat Weight 1.01 CARAT  
Color Grade D  
Clarity Grade VS 1  
Depth 63.4%  
Table 61%  
Girdle Medium to Slightly Thick (Faceted)  
Culet Pointed  
Polish EXCELLENT  
Symmetry EXCELLENT  
Fluorescence NONE  
Inscription(s) IGI LG793649804  
Comments: This Laboratory Grown Diamond was created by Chemical Vapor Deposition (CVD) growth process. Type IIa