



ELECTRONIC COPY

LG793649605
Report verification at igi.org



April 24, 2026

IGI Report Number **LG793649605**

Description **LABORATORY GROWN DIAMOND**

Shape and Cutting Style **PEAR BRILLIANT**

Measurements **8.44 X 5.62 X 3.65 MM**

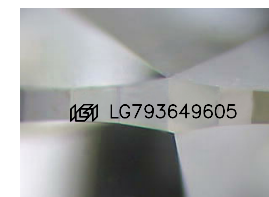
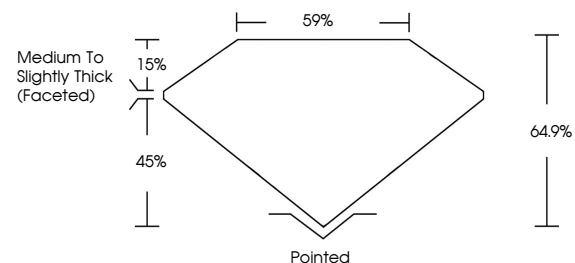
GRADING RESULTS

Carat Weight **1.04 CARAT**

Color Grade **D**

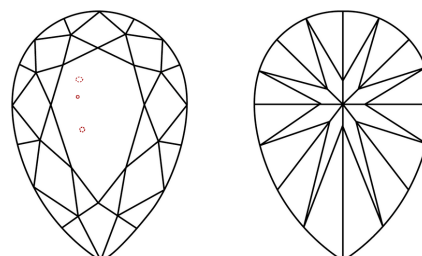
Clarity Grade **VS 2**

PROPORTIONS



Sample Image Used

CLARITY CHARACTERISTICS



KEY TO SYMBOLS

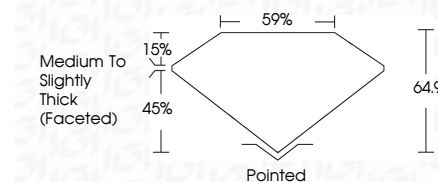
Red symbols indicate internal characteristics.
Green symbols indicate external characteristics.

COLOR

D E F G H I J Faint Very Light Light

CLARITY

FL	IF	VS ¹⁻²	VS ¹⁻²	SI ¹⁻²	I ¹⁻³
Flawless	Internally Flawless	Very Very Slightly Included	Very Slightly Included	Slightly Included	Included



ADDITIONAL GRADING INFORMATION

Polish **EXCELLENT**

Symmetry **EXCELLENT**

Fluorescence **NONE**

Inscription(s) **IGI LG793649605**

Comments: This Laboratory Grown Diamond was created by Chemical Vapor Deposition (CVD) growth process. Type IIa



IGI



April 24, 2026	1.04 CARAT	D	VS 2	64.9%	59%	Pointed	EXCELLENT	EXCELLENT	NONE	IGI LG793649605
IGI Report No LG793649605	8.44 X 5.62 X 3.65 MM	Color Grade	Clarity Grade	Table	Girdle	Culet	Polish	Symmetry	Fluorescence	Inscription(s)
PEAR BRILLIANT					Medium to Slightly Thick (Faceted)					

Comments: This Laboratory Grown Diamond was created by Chemical Vapor Deposition (CVD) growth process. Type IIa