



ELECTRONIC COPY

LG793649411
Report verification at igi.org



May 7, 2026
IGI Report Number **LG793649411**
Description **LABORATORY GROWN DIAMOND**
Shape and Cutting Style **ROUND BRILLIANT**
Measurements **11.01 - 11.11 X 6.73 MM**
GRADING RESULTS
Carat Weight **5.22 CARATS**
Color Grade **FANCY DEEP ORANGE**
Clarity Grade **VS 2**
Cut Grade **VERY GOOD**

May 7, 2026
IGI Report Number **LG793649411**
Description **LABORATORY GROWN DIAMOND**
Shape and Cutting Style **ROUND BRILLIANT**
Measurements **11.01 - 11.11 X 6.73 MM**

GRADING RESULTS

Carat Weight **5.22 CARATS**
Color Grade **FANCY DEEP ORANGE**
Clarity Grade **VS 2**
Cut Grade **VERY GOOD**

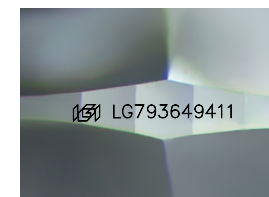
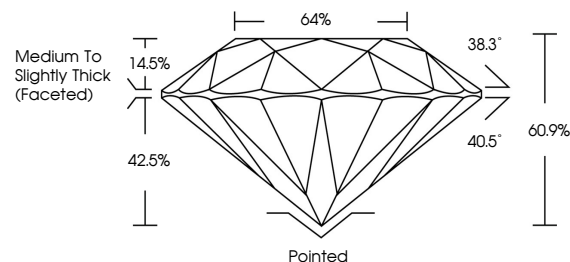
ADDITIONAL GRADING INFORMATION

Polish **VERY GOOD**
Symmetry **VERY GOOD**
Fluorescence **NONE**
Inscription(s) **LG793649411**

Comments: This Laboratory Grown Diamond was created by Chemical Vapor Deposition (CVD) growth process.
Indications of post-growth treatment.

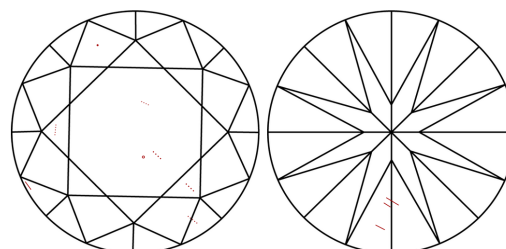
Secondary color: Brown

PROPORTIONS



Sample Image Used

CLARITY CHARACTERISTICS



KEY TO SYMBOLS

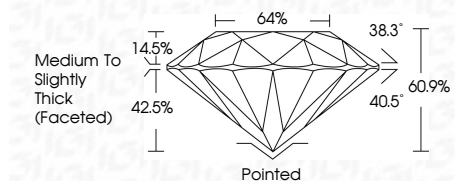
Red symbols indicate internal characteristics.
Green symbols indicate external characteristics.

COLOR

D E F G H I J Faint Very Light Light

CLARITY

FL	IF	VS ¹⁻²	VS ¹⁻²	SI ¹⁻²	I ¹⁻³
Flawless	Internally Flawless	Very Very Slightly Included	Very Slightly Included	Slightly Included	Included



ADDITIONAL GRADING INFORMATION

Polish **VERY GOOD**
Symmetry **VERY GOOD**
Fluorescence **NONE**
Inscription(s) **LG793649411**
Comments: This Laboratory Grown Diamond was created by Chemical Vapor Deposition (CVD) growth process.
Indications of post-growth treatment.
Secondary color: Brown



May 7, 2026
IGI Report No **LG793649411**
ROUND BRILLIANT
11.01 - 11.11 X 6.73 MM
Carat Weight **5.22 CARATS**
Color Grade **FANCY DEEP ORANGE**
Clarity Grade **VS 2**
Depth **42.5%**
Table **14.5%**
Girdle **64%**
Medium To Slightly Thick (Faceted)
Culet **Pointed**
Polish **VERY GOOD**
Symmetry **VERY GOOD**
Fluorescence **NONE**
Inscription(s) **LG793649411**
Comments: This Laboratory Grown Diamond was created by Chemical Vapor Deposition (CVD) growth process.
Indications of post-growth treatment.
Secondary color: Brown