



ELECTRONIC COPY

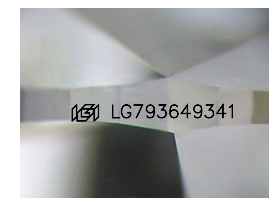
LG793649341
Report verification at igi.org



April 29, 2026
IGI Report Number **LG793649341**
Description **LABORATORY GROWN DIAMOND**

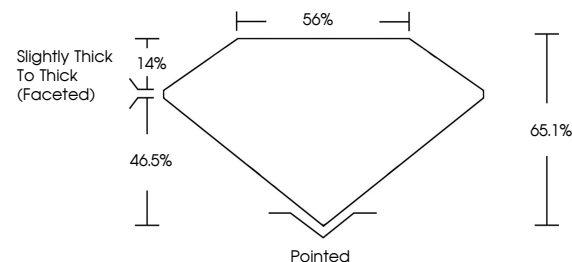
Shape and Cutting Style **PEAR MODIFIED BRILLIANT**
Measurements **8.53 X 5.22 X 3.40 MM**

GRADING RESULTS
Carat Weight **1.08 CARAT**
Color Grade **FANCY INTENSE YELLOW**
Clarity Grade **VS 1**

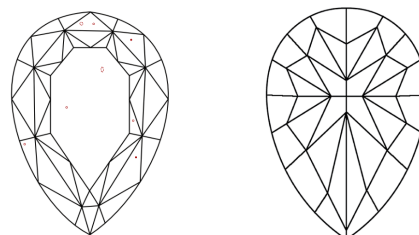


Sample Image Used

PROPORTIONS



CLARITY CHARACTERISTICS



KEY TO SYMBOLS

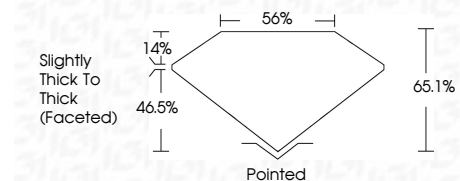
Red symbols indicate internal characteristics.
Green symbols indicate external characteristics.

COLOR

D E F G H I J Faint Very Light Light

CLARITY

FL	IF	VS ¹⁻²	VS ¹⁻²	SI ¹⁻²	I ¹⁻³
Flawless	Internally Flawless	Very Very Slightly Included	Very Slightly Included	Slightly Included	Included



ADDITIONAL GRADING INFORMATION

Polish **EXCELLENT**
Symmetry **EXCELLENT**
Fluorescence **NONE**
Inscription(s) **IGI LG793649341**
Comments: This Laboratory Grown Diamond was created by Chemical Vapor Deposition (CVD) growth process.



April 29, 2026
IGI Report No **LG793649341**
PEAR MODIFIED BRILLIANT
8.53 X 5.22 X 3.40 MM
Carat Weight **1.08 CARAT**
Color Grade **FANCY INTENSE YELLOW**
Clarity Grade **VS 1**
Depth **46.5%**
Table **14%**
Girdle **Slightly Thick To Thick (Faceted)**
Culet **Pointed**
Polish **EXCELLENT**
Symmetry **EXCELLENT**
Fluorescence **NONE**
Inscription(s) **IGI LG793649341**
Comments: This Laboratory Grown Diamond was created by Chemical Vapor Deposition (CVD) growth process.