



ELECTRONIC COPY

LG793649338
Report verification at igi.org



April 30, 2026
IGI Report Number **LG793649338**
Description **LABORATORY GROWN DIAMOND**
Shape and Cutting Style **OVAL MIXED CUT**
Measurements **11.41 X 5.86 X 4.06 MM**
GRADING RESULTS
Carat Weight **2.02 CARATS**
Color Grade **FANCY INTENSE YELLOW**
Clarity Grade **VS 2**

April 30, 2026
IGI Report Number **LG793649338**
Description **LABORATORY GROWN DIAMOND**
Shape and Cutting Style **OVAL MIXED CUT**
Measurements **11.41 X 5.86 X 4.06 MM**

GRADING RESULTS

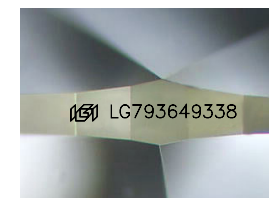
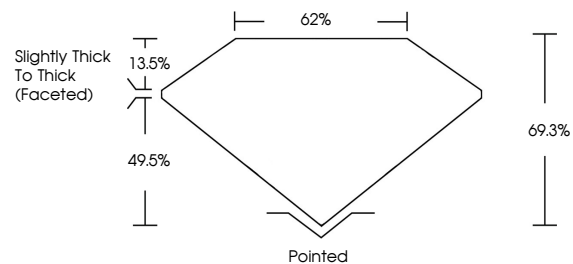
Carat Weight **2.02 CARATS**
Color Grade **FANCY INTENSE YELLOW**
Clarity Grade **VS 2**

ADDITIONAL GRADING INFORMATION

Polish **EXCELLENT**
Symmetry **VERY GOOD**
Fluorescence **NONE**
Inscription(s) **IGI LG793649338**

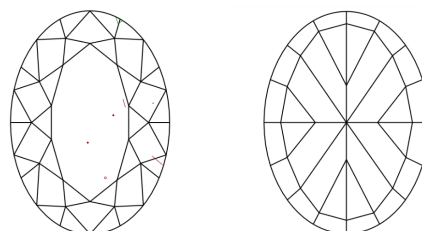
Comments: This Laboratory Grown Diamond was created by Chemical Vapor Deposition (CVD) growth process.

PROPORTIONS



Sample Image Used

CLARITY CHARACTERISTICS



KEY TO SYMBOLS

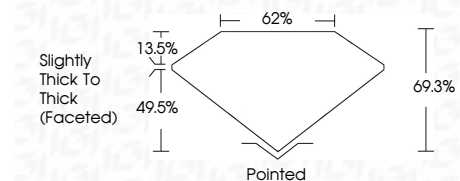
Red symbols indicate internal characteristics.
Green symbols indicate external characteristics.

COLOR

D E F G H I J Faint Very Light Light

CLARITY

FL	IF	VS ¹⁻²	VS ¹⁻²	SI ¹⁻²	I ¹⁻³
Flawless	Internally Flawless	Very Very Slightly Included	Very Slightly Included	Slightly Included	Included



ADDITIONAL GRADING INFORMATION

Polish **EXCELLENT**
Symmetry **VERY GOOD**
Fluorescence **NONE**
Inscription(s) **IGI LG793649338**
Comments: This Laboratory Grown Diamond was created by Chemical Vapor Deposition (CVD) growth process.



April 30, 2026
IGI Report No LG793649338
OVAL MIXED CUT
11.41 X 5.86 X 4.06 MM
2.02 CARATS
FANCY INTENSE YELLOW
VS 2
69.3%
62%
Slightly Thick To Thick (Faceted)
Pointed
EXCELLENT
VERY GOOD
NONE
IGI LG793649338
Comments: This Laboratory Grown Diamond was created by Chemical Vapor Deposition (CVD) growth process.