



ELECTRONIC COPY

LG793648462
Report verification at igi.org



April 27, 2026
IGI Report Number **LG793648462**
Description **LABORATORY GROWN DIAMOND**
Shape and Cutting Style **RECTANGULAR CUSHION MIXED CUT**
Measurements **12.66 X 6.46 X 4.15 MM**
GRADING RESULTS
Carat Weight **3.17 CARATS**
Color Grade **F**
Clarity Grade **VS 1**

LABORATORY GROWN DIAMOND REPORT

April 27, 2026
IGI Report Number **LG793648462**
Description **LABORATORY GROWN DIAMOND**
Shape and Cutting Style **RECTANGULAR CUSHION MIXED CUT**
Measurements **12.66 X 6.46 X 4.15 MM**

GRADING RESULTS

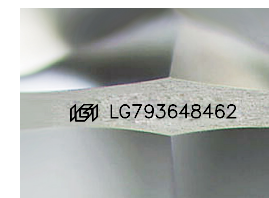
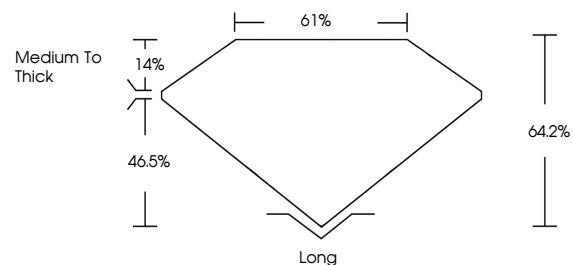
Carat Weight **3.17 CARATS**
Color Grade **F**
Clarity Grade **VS 1**

ADDITIONAL GRADING INFORMATION

Polish **EXCELLENT**
Symmetry **EXCELLENT**
Fluorescence **NONE**
Inscription(s) **IGI LG793648462**

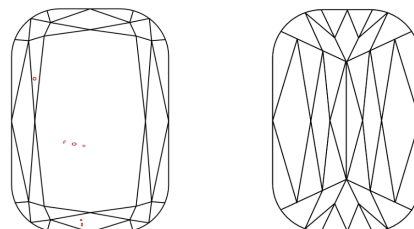
Comments: This Laboratory Grown Diamond was created by Chemical Vapor Deposition (CVD) growth process.
Type IIa

PROPORTIONS



Sample Image Used

CLARITY CHARACTERISTICS



KEY TO SYMBOLS

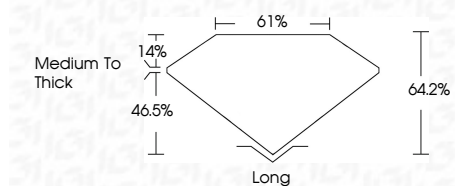
Red symbols indicate internal characteristics.
Green symbols indicate external characteristics.

COLOR

D E F G H I J Faint Very Light Light

CLARITY

FL	IF	VS ¹⁻²	VS ¹⁻²	SI ¹⁻²	I ¹⁻³
Flawless	Internally Flawless	Very Very Slightly Included	Very Slightly Included	Slightly Included	Included



ADDITIONAL GRADING INFORMATION

Polish **EXCELLENT**
Symmetry **EXCELLENT**
Fluorescence **NONE**
Inscription(s) **IGI LG793648462**
Comments: This Laboratory Grown Diamond was created by Chemical Vapor Deposition (CVD) growth process.
Type IIa



IGI



April 27, 2026
IGI Report No LG793648462
RECTANGULAR CUSHION MIXED CUT
12.66 X 6.46 X 4.15 MM
3.17 CARATS
F
VS 1
64.2%
61%
Medium To Thick
Long
EXCELLENT
EXCELLENT
NONE
IGI LG793648462
Comments: This Laboratory Grown Diamond was created by Chemical Vapor Deposition (CVD) growth process.
Type IIa