



ELECTRONIC COPY

LG793645760
Report verification at igi.org



May 4, 2026
IGI Report Number **LG793645760**
Description **LABORATORY GROWN DIAMOND**
Shape and Cutting Style **ROUND BRILLIANT**
Measurements **10.80 - 10.84 X 6.28 MM**
GRADING RESULTS
Carat Weight **4.51 CARATS**
Color Grade **F**
Clarity Grade **VVS 2**
Cut Grade **EXCELLENT**

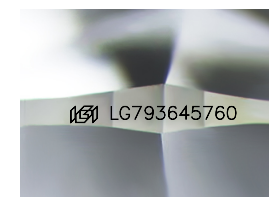
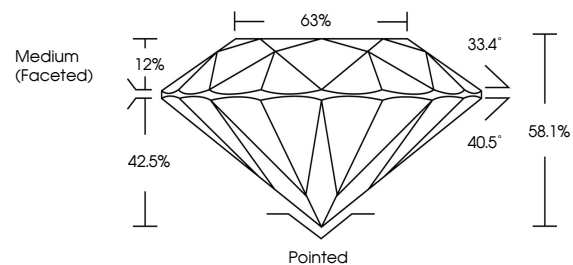
May 4, 2026
IGI Report Number **LG793645760**
Description **LABORATORY GROWN DIAMOND**
Shape and Cutting Style **ROUND BRILLIANT**
Measurements **10.80 - 10.84 X 6.28 MM**
GRADING RESULTS
Carat Weight **4.51 CARATS**
Color Grade **F**
Clarity Grade **VVS 2**
Cut Grade **EXCELLENT**

ADDITIONAL GRADING INFORMATION

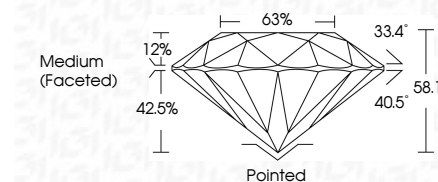
Polish **EXCELLENT**
Symmetry **EXCELLENT**
Fluorescence **NONE**
Inscription(s) **IGI LG793645760**

Comments: This Laboratory Grown Diamond was created by Chemical Vapor Deposition (CVD) growth process. Type IIa

PROPORTIONS



Sample Image Used



COLOR

D E F G H I J Faint Very Light Light

CLARITY

FL	IF	VS ¹⁻²	VS ¹⁻²	SI ¹⁻²	I ¹⁻³
Flawless	Internally Flawless	Very Very Slightly Included	Very Slightly Included	Slightly Included	Included

ADDITIONAL GRADING INFORMATION

Polish **EXCELLENT**
Symmetry **EXCELLENT**
Fluorescence **NONE**
Inscription(s) **IGI LG793645760**
Comments: This Laboratory Grown Diamond was created by Chemical Vapor Deposition (CVD) growth process. Type IIa



IGI



May 4, 2026
IGI Report No **LG793645760**
ROUND BRILLIANT
10.80 - 10.84 X 6.28 MM
Carat Weight **4.51 CARATS**
Color Grade **F**
Clarity Grade **VVS 2**
Depth **58.1%**
Table **63%**
Girdle **Medium (Faceted)**
Culet **Pointed**
Polish **EXCELLENT**
Symmetry **EXCELLENT**
Fluorescence **NONE**
Inscriptions(s) **IGI LG793645760**
Comments: This Laboratory Grown Diamond was created by Chemical Vapor Deposition (CVD) growth process. Type IIa