



ELECTRONIC COPY

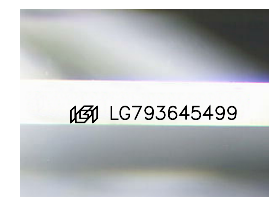
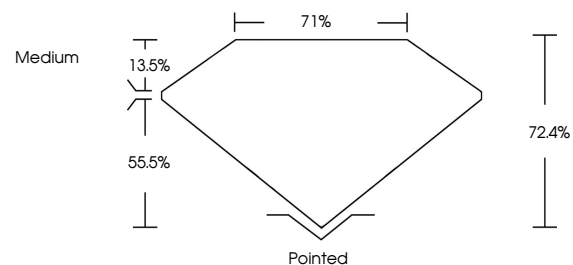
LG793645499
Report verification at igi.org



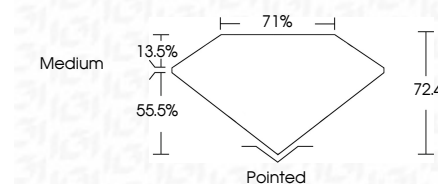
April 30, 2026
IGI Report Number **LG793645499**
Description **LABORATORY GROWN DIAMOND**
Shape and Cutting Style **PRINCESS CUT**
Measurements **6.85 X 6.80 X 4.92 MM**
GRADING RESULTS
Carat Weight **2.04 CARATS**
Color Grade **D**
Clarity Grade **VVS 2**

April 30, 2026
IGI Report Number **LG793645499**
Description **LABORATORY GROWN DIAMOND**
Shape and Cutting Style **PRINCESS CUT**
Measurements **6.85 X 6.80 X 4.92 MM**
GRADING RESULTS
Carat Weight **2.04 CARATS**
Color Grade **D**
Clarity Grade **VVS 2**

PROPORTIONS



Sample Image Used



ADDITIONAL GRADING INFORMATION

Polish **EXCELLENT**
Symmetry **EXCELLENT**
Fluorescence **NONE**
Inscription(s) **IGI LG793645499**

Comments: This Laboratory Grown Diamond was created by Chemical Vapor Deposition (CVD) growth process.
Type IIa

ADDITIONAL GRADING INFORMATION

Polish **EXCELLENT**
Symmetry **EXCELLENT**
Fluorescence **NONE**
Inscription(s) **IGI LG793645499**
Comments: This Laboratory Grown Diamond was created by Chemical Vapor Deposition (CVD) growth process.
Type IIa

COLOR

D E F G H I J Faint Very Light Light

CLARITY

FL	IF	VVS ¹⁻²	VS ¹⁻²	SI ¹⁻²	I ¹⁻³
Flawless	Internally Flawless	Very Very Slightly Included	Very Slightly Included	Slightly Included	Included



IGI



April 30, 2026
IGI Report No. **LG793645499**
PRINCESS CUT
6.85 X 6.80 X 4.92 MM
Carat Weight **2.04 CARATS**
Color Grade **D**
Clarity Grade **VVS 2**
Depth **72.4%**
Table **71%**
Girdle **Medium**
Culet **Pointed**
Polish **EXCELLENT**
Symmetry **EXCELLENT**
Fluorescence **NONE**
Inscription(s) **IGI LG793645499**
Comments: This Laboratory Grown Diamond was created by Chemical Vapor Deposition (CVD) growth process.
Type IIa