



**ELECTRONIC COPY**

LG793643829  
Report verification at igi.org



April 22, 2026  
IGI Report Number **LG793643829**  
Description **LABORATORY GROWN DIAMOND**  
Shape and Cutting Style **CUSHION MODIFIED BRILLIANT**  
Measurements **10.07 X 7.63 X 5.06 MM**  
**GRADING RESULTS**  
Carat Weight **3.07 CARATS**  
Color Grade **E**  
Clarity Grade **VVS 2**

April 22, 2026  
IGI Report Number **LG793643829**  
Description **LABORATORY GROWN DIAMOND**  
Shape and Cutting Style **CUSHION MODIFIED BRILLIANT**  
Measurements **10.07 X 7.63 X 5.06 MM**

**GRADING RESULTS**

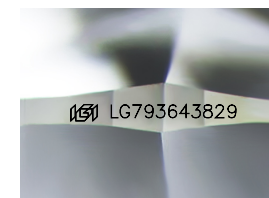
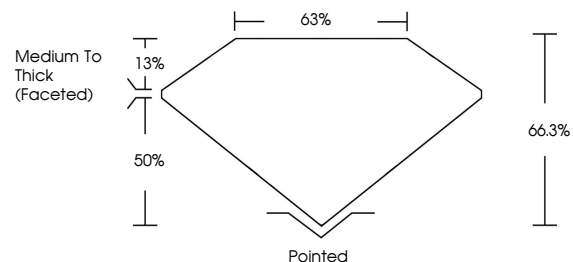
Carat Weight **3.07 CARATS**  
Color Grade **E**  
Clarity Grade **VVS 2**

**ADDITIONAL GRADING INFORMATION**

Polish **EXCELLENT**  
Symmetry **EXCELLENT**  
Fluorescence **NONE**  
Inscription(s) **IGI LG793643829**

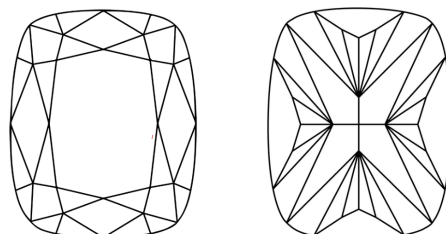
Comments: This Laboratory Grown Diamond was created by Chemical Vapor Deposition (CVD) growth process. Type IIa

**PROPORTIONS**



Sample Image Used

**CLARITY CHARACTERISTICS**



**KEY TO SYMBOLS**

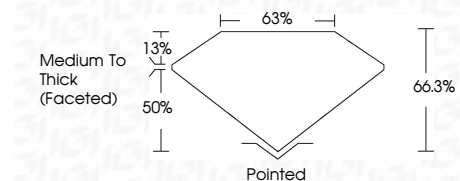
Red symbols indicate internal characteristics.  
Green symbols indicate external characteristics.

**COLOR**

D E F G H I J Faint Very Light Light

**CLARITY**

FL	IF	VVS <sup>1-2</sup>	VS <sup>1-2</sup>	SI <sup>1-2</sup>	I <sup>1-3</sup>
Flawless	Internally Flawless	Very Very Slightly Included	Very Slightly Included	Slightly Included	Included



**ADDITIONAL GRADING INFORMATION**

Polish **EXCELLENT**  
Symmetry **EXCELLENT**  
Fluorescence **NONE**  
Inscription(s) **IGI LG793643829**  
Comments: This Laboratory Grown Diamond was created by Chemical Vapor Deposition (CVD) growth process. Type IIa



April 22, 2026  
IGI Report No LG793643829  
**CUSHION MODIFIED BRILLIANT**  
10.07 X 7.63 X 5.06 MM  
3.07 CARATS  
E  
VVS 2  
66.3%  
50%  
Medium To Thick (Faceted)  
Pointed  
EXCELLENT  
EXCELLENT  
NONE  
IGI LG793643829  
Comments: This Laboratory Grown Diamond was created by Chemical Vapor Deposition (CVD) growth process. Type IIa