



ELECTRONIC COPY

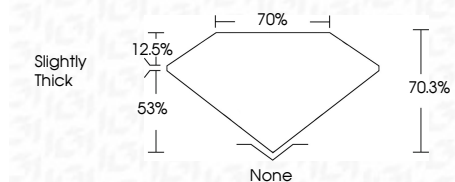
LG793640498
Report verification at igi.org



April 20, 2026
IGI Report Number **LG793640498**
Description **LABORATORY GROWN DIAMOND**
Shape and Cutting Style **MODIFIED PEAR STEP CUT**
Measurements **10.15 X 6.74 X 4.74 MM**

GRADING RESULTS

Carat Weight **2.19 CARATS**
Color Grade **D**
Clarity Grade **VVS 2**



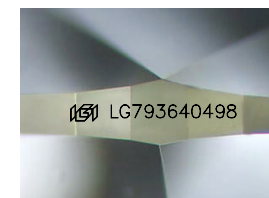
ADDITIONAL GRADING INFORMATION

Polish **EXCELLENT**
Symmetry **EXCELLENT**
Fluorescence **NONE**
Inscription(s) **IGI LG793640498**
Comments: This Laboratory Grown Diamond was created by Chemical Vapor Deposition (CVD) growth process. Type IIa



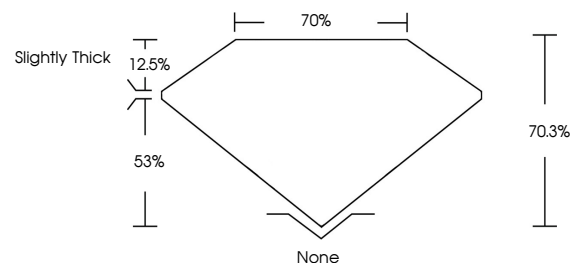
IGI

April 20, 2026
IGI Report No LG793640498
MODIFIED PEAR STEP CUT
10.15 X 6.74 X 4.74 MM
Carat Weight **2.19 CARATS**
Color Grade **D**
Clarity Grade **VVS 2**
Depth **70.3%**
Table **12.5%**
Girdle **Slightly Thick**
Culet **None**
Polish **EXCELLENT**
Symmetry **EXCELLENT**
Fluorescence **NONE**
Inscription(s) **IGI LG793640498**
Comments: This Laboratory Grown Diamond was created by Chemical Vapor Deposition (CVD) growth process. Type IIa

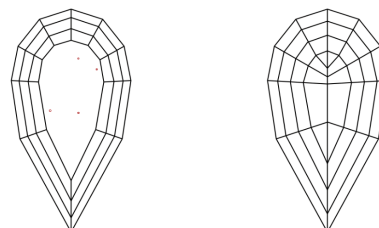


Sample Image Used

PROPORTIONS



CLARITY CHARACTERISTICS



KEY TO SYMBOLS

Red symbols indicate internal characteristics.
Green symbols indicate external characteristics.

COLOR

D E F G H I J Faint Very Light Light

CLARITY

FL	IF	VVS ¹⁻²	VS ¹⁻²	SI ¹⁻²	I ¹⁻³
Flawless	Internally Flawless	Very Very Slightly Included	Very Slightly Included	Slightly Included	Included

