



**ELECTRONIC COPY**

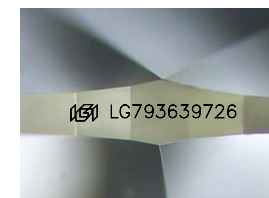
LG793639726  
Report verification at igi.org



April 22, 2026  
IGI Report Number **LG793639726**  
Description **LABORATORY GROWN DIAMOND**  
Shape and Cutting Style **MARQUISE BRILLIANT**  
Measurements **11.24 X 5.96 X 3.85 MM**

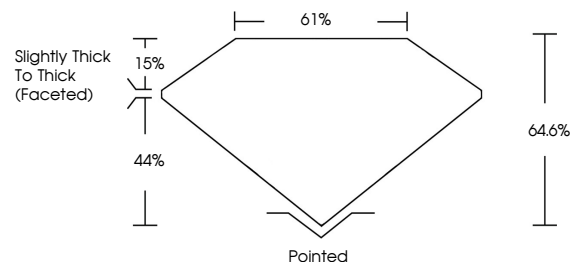
**GRADING RESULTS**

Carat Weight **1.52 CARAT**  
Color Grade **E**  
Clarity Grade **VVS 2**

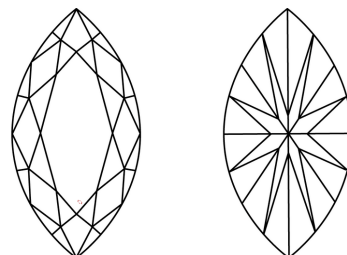


Sample Image Used

**PROPORTIONS**

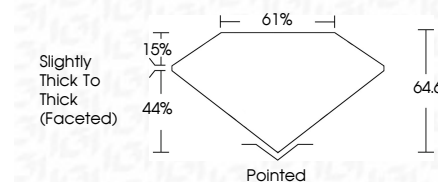


**CLARITY CHARACTERISTICS**



**KEY TO SYMBOLS**

Red symbols indicate internal characteristics.  
Green symbols indicate external characteristics.



**ADDITIONAL GRADING INFORMATION**

Polish **EXCELLENT**  
Symmetry **EXCELLENT**  
Fluorescence **NONE**  
Inscription(s) **IGI LG793639726**  
Comments: This Laboratory Grown Diamond was created by Chemical Vapor Deposition (CVD) growth process. Type IIa

**COLOR**

D E F G H I J Faint Very Light Light

**CLARITY**

FL	IF	VVS <sup>1-2</sup>	VS <sup>1-2</sup>	SI <sup>1-2</sup>	I <sup>1-3</sup>
Flawless	Internally Flawless	Very Very Slightly Included	Very Slightly Included	Slightly Included	Included



April 22, 2026  
IGI Report No LG793639726  
MARQUISE BRILLIANT  
11.24 X 5.96 X 3.85 MM  
1.52 CARAT  
Color Grade E  
Clarity Grade VVS 2  
Depth 64.6%  
Table 61%  
Girdle Slightly Thick To Thick (Faceted)  
Culet Pointed  
Polish EXCELLENT  
Symmetry EXCELLENT  
Fluorescence NONE  
Inscription(s) IGI LG793639726  
Comments: This Laboratory Grown Diamond was created by Chemical Vapor Deposition (CVD) growth process. Type IIa