



ELECTRONIC COPY

LG793637350
Report verification at igi.org



April 23, 2026

IGI Report Number **LG793637350**

Description **LABORATORY GROWN DIAMOND**

Shape and Cutting Style **PRINCESS CUT**

Measurements **6.99 X 6.95 X 4.68 MM**

GRADING RESULTS

Carat Weight **2.01 CARATS**

Color Grade **FANCY VIVID GREEN**

Clarity Grade **VS 1**

April 23, 2026
IGI Report Number **LG793637350**
Description **LABORATORY GROWN DIAMOND**
Shape and Cutting Style **PRINCESS CUT**
Measurements **6.99 X 6.95 X 4.68 MM**

GRADING RESULTS

Carat Weight **2.01 CARATS**

Color Grade **FANCY VIVID GREEN**

Clarity Grade **VS 1**

ADDITIONAL GRADING INFORMATION

Polish **EXCELLENT**

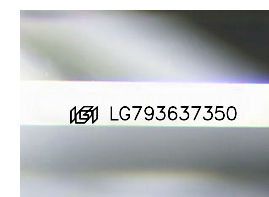
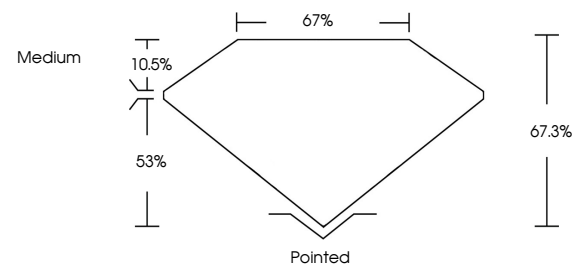
Symmetry **EXCELLENT**

Fluorescence **NONE**

Inscription(s) **LG793637350**

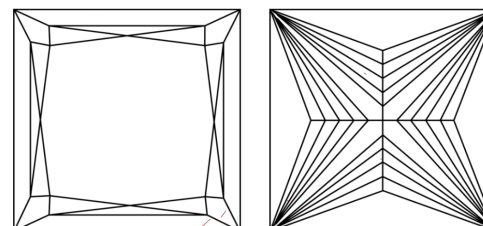
Comments: This Laboratory Grown Diamond was created by Chemical Vapor Deposition (CVD) growth process.
Indications of post-growth treatment.

PROPORTIONS



Sample Image Used

CLARITY CHARACTERISTICS



KEY TO SYMBOLS

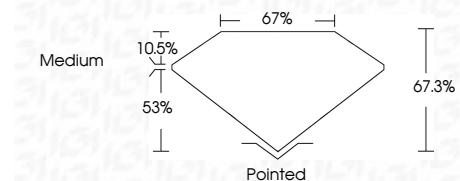
Red symbols indicate internal characteristics.
Green symbols indicate external characteristics.

COLOR

D E F G H I J Faint Very Light Light

CLARITY

FL	IF	VS ¹⁻²	VS ¹⁻²	SI ¹⁻²	I ¹⁻³
Flawless	Internally Flawless	Very Very Slightly Included	Very Slightly Included	Slightly Included	Included



ADDITIONAL GRADING INFORMATION

Polish **EXCELLENT**

Symmetry **EXCELLENT**

Fluorescence **NONE**

Inscription(s) **LG793637350**

Comments: This Laboratory Grown Diamond was created by Chemical Vapor Deposition (CVD) growth process.
Indications of post-growth treatment.



IGI



April 23, 2026
IGI Report No LG793637350
PRINCESS CUT

2.01 CARATS
FANCY VIVID GREEN

6.99 X 6.95 X 4.68 MM

VS 1
67.3%
67%

Medium

Pointed
EXCELLENT
EXCELLENT
NONE
IGI LG793637350

Comments: This Laboratory Grown Diamond was created by Chemical Vapor Deposition (CVD) growth process.
Indications of post-growth treatment.