



ELECTRONIC COPY

LG793637332
Report verification at igi.org



April 22, 2026
IGI Report Number **LG793637332**
Description **LABORATORY GROWN DIAMOND**
Shape and Cutting Style **PRINCESS CUT**
Measurements **6.68 X 6.59 X 4.73 MM**
GRADING RESULTS
Carat Weight **1.85 CARAT**
Color Grade **FANCY INTENSE GREEN**
Clarity Grade **VS 1**

April 22, 2026
IGI Report Number **LG793637332**
Description **LABORATORY GROWN DIAMOND**
Shape and Cutting Style **PRINCESS CUT**
Measurements **6.68 X 6.59 X 4.73 MM**

GRADING RESULTS

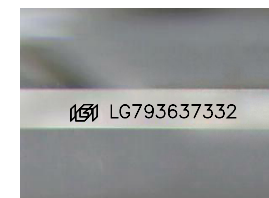
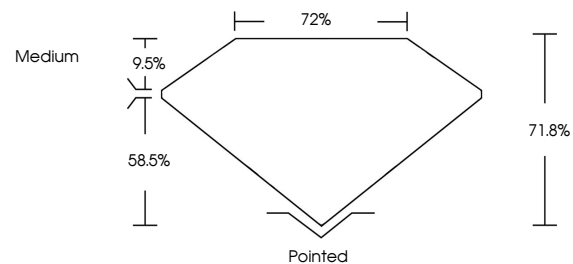
Carat Weight **1.85 CARAT**
Color Grade **FANCY INTENSE GREEN**
Clarity Grade **VS 1**

ADDITIONAL GRADING INFORMATION

Polish **EXCELLENT**
Symmetry **EXCELLENT**
Fluorescence **VERY SLIGHT**
Inscription(s) **IGI LG793637332**

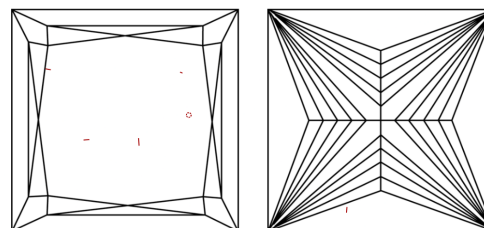
Comments: This Laboratory Grown Diamond was created by Chemical Vapor Deposition (CVD) growth process. Indications of post-growth treatment.

PROPORTIONS



Sample Image Used

CLARITY CHARACTERISTICS



KEY TO SYMBOLS

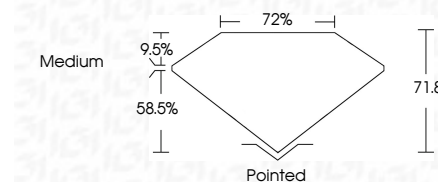
Red symbols indicate internal characteristics.
Green symbols indicate external characteristics.

COLOR

D E F G H I J Faint Very Light Light

CLARITY

FL	IF	VS ¹⁻²	VS ¹⁻²	SI ¹⁻²	I ¹⁻³
Flawless	Internally Flawless	Very Very Slightly Included	Very Slightly Included	Slightly Included	Included



ADDITIONAL GRADING INFORMATION

Polish **EXCELLENT**
Symmetry **EXCELLENT**
Fluorescence **VERY SLIGHT**
Inscription(s) **IGI LG793637332**
Comments: This Laboratory Grown Diamond was created by Chemical Vapor Deposition (CVD) growth process. Indications of post-growth treatment.



April 22, 2026
IGI Report No LG793637332
PRINCESS CUT
6.68 X 6.59 X 4.73 MM
1.85 CARAT
FANCY INTENSE GREEN
VS 1
71.8%
72%
Medium
Pointed
EXCELLENT
EXCELLENT
VERY SLIGHT
IGI LG793637332
Comments: This Laboratory Grown Diamond was created by Chemical Vapor Deposition (CVD) growth process. Indications of post-growth treatment.