



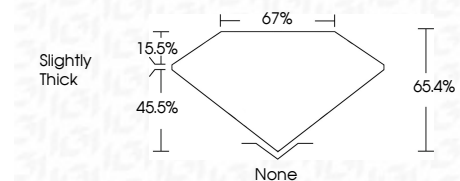
ELECTRONIC COPY

LG793635638
Report verification at igi.org



April 21, 2026
IGI Report Number **LG793635638**
Description **LABORATORY GROWN DIAMOND**
Shape and Cutting Style **OCTAGONAL STEP CUT**
Measurements **9.70 X 7.39 X 4.83 MM**

GRADING RESULTS
Carat Weight **3.04 CARATS**
Color Grade **D**
Clarity Grade **VVS 2**



ADDITIONAL GRADING INFORMATION
Polish **EXCELLENT**
Symmetry **EXCELLENT**
Fluorescence **NONE**
Inscription(s) **IGI LG793635638**
Comments: This Laboratory Grown Diamond was created by Chemical Vapor Deposition (CVD) growth process. Type IIa



April 21, 2026
IGI Report No LG793635638
OCTAGONAL STEP CUT
9.70 X 7.39 X 4.83 MM
3.04 CARATS
D
VVS 2
65.4%
15.5%
None
EXCELLENT
EXCELLENT
NONE
IGI LG793635638
None
EXCELLENT
EXCELLENT
NONE
IGI LG793635638
Comments: This Laboratory Grown Diamond was created by Chemical Vapor Deposition (CVD) growth process. Type IIa

LABORATORY GROWN DIAMOND REPORT

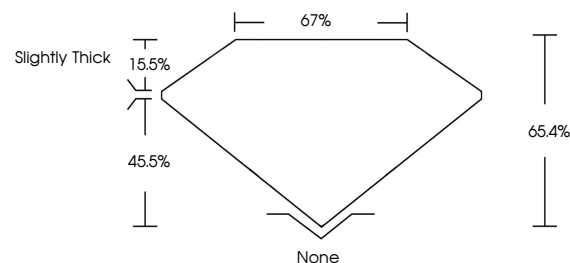
April 21, 2026
IGI Report Number **LG793635638**
Description **LABORATORY GROWN DIAMOND**
Shape and Cutting Style **OCTAGONAL STEP CUT**
Measurements **9.70 X 7.39 X 4.83 MM**

GRADING RESULTS
Carat Weight **3.04 CARATS**
Color Grade **D**
Clarity Grade **VVS 2**

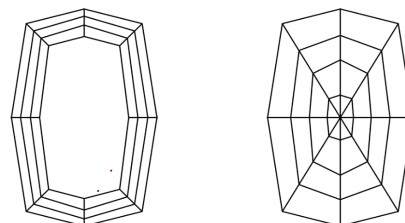
ADDITIONAL GRADING INFORMATION
Polish **EXCELLENT**
Symmetry **EXCELLENT**
Fluorescence **NONE**
Inscription(s) **IGI LG793635638**

Comments: This Laboratory Grown Diamond was created by Chemical Vapor Deposition (CVD) growth process. Type IIa

PROPORTIONS

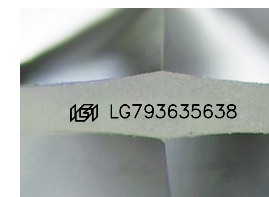


CLARITY CHARACTERISTICS



KEY TO SYMBOLS

Red symbols indicate internal characteristics.
Green symbols indicate external characteristics.



Sample Image Used

COLOR

D E F G H I J Faint Very Light Light

CLARITY

| FL | IF | VVS ¹⁻² | VS ¹⁻² | SI ¹⁻² | I ¹⁻³ |
|----------|---------------------|-----------------------------|------------------------|-------------------|------------------|
| Flawless | Internally Flawless | Very Very Slightly Included | Very Slightly Included | Slightly Included | Included |

