



ELECTRONIC COPY

LG793634161 Report verification at igi.org



May 2, 2026 IGI Report Number LG793634161 Description LABORATORY GROWN DIAMOND Shape and Cutting Style HEXAGONAL MODIFIED BRILLIANT Measurements 11.97 X 6.03 X 4.18 MM GRADING RESULTS Carat Weight 2.08 CARATS Color Grade E Clarity Grade VVS 2

LABORATORY GROWN DIAMOND REPORT

May 2, 2026 IGI Report Number LG793634161 Description LABORATORY GROWN DIAMOND Shape and Cutting Style HEXAGONAL MODIFIED BRILLIANT Measurements 11.97 X 6.03 X 4.18 MM

GRADING RESULTS

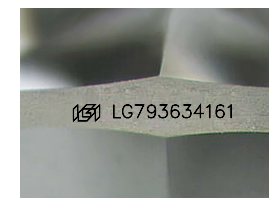
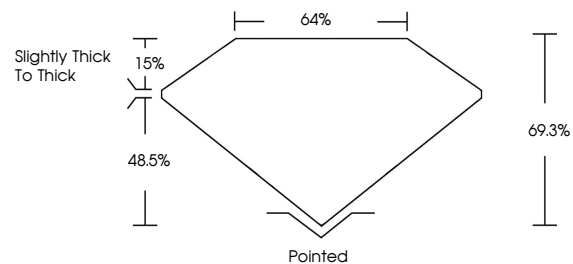
Carat Weight 2.08 CARATS Color Grade E Clarity Grade VVS 2

ADDITIONAL GRADING INFORMATION

Polish EXCELLENT Symmetry EXCELLENT Fluorescence NONE Inscription(s) LG793634161

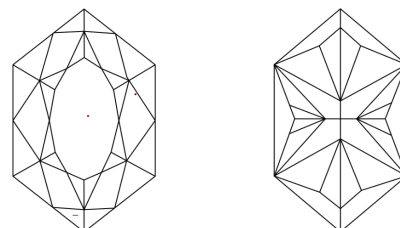
Comments: This Laboratory Grown Diamond was created by Chemical Vapor Deposition (CVD) growth process. Type IIa

PROPORTIONS



Sample Image Used

CLARITY CHARACTERISTICS



KEY TO SYMBOLS

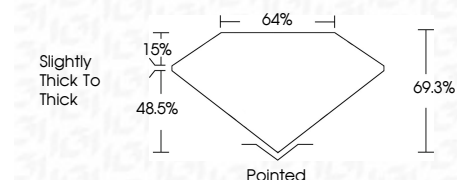
Red symbols indicate internal characteristics. Green symbols indicate external characteristics.

COLOR

D E F G H I J Faint Very Light Light

CLARITY

Table with columns for clarity grades: FL, IF, VVS 1-2, VS 1-2, SI 1-2, I 1-3. Below are corresponding descriptions: Flawless, Internally Flawless, Very Very Slightly Included, Very Slightly Included, Slightly Included, Included.



ADDITIONAL GRADING INFORMATION

Polish EXCELLENT Symmetry EXCELLENT Fluorescence NONE Inscription(s) LG793634161 Comments: This Laboratory Grown Diamond was created by Chemical Vapor Deposition (CVD) growth process. Type IIa



May 2, 2026 IGI Report No LG793634161 HEXAGONAL MODIFIED BRILLIANT 2.08 CARATS E VVS 2 69.3% 64% Slightly thick to thick Pointed EXCELLENT EXCELLENT NONE NONE LG793634161 Comments: This Laboratory Grown Diamond was created by Chemical Vapor Deposition (CVD) growth process. Type IIa